

**Special
Catalogue and Price List**

of

**Instructive
Mechanical, Optical
and
Electrical Toys.**

1902 Edition.

The issue of this list cancels all others.

Gold Medal



Paris 1900.



TRADE



MARK.



2 Medals Chicago 1893.



Gold Medal



Nuremberg 1882.

Gold Medal



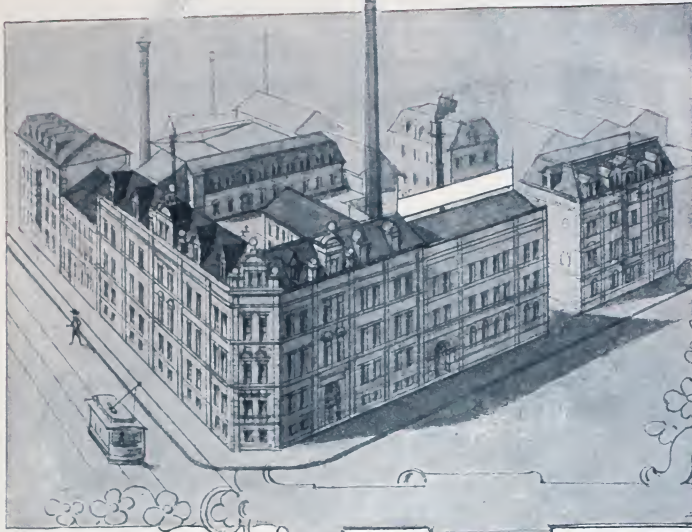
Nuremberg 1896.



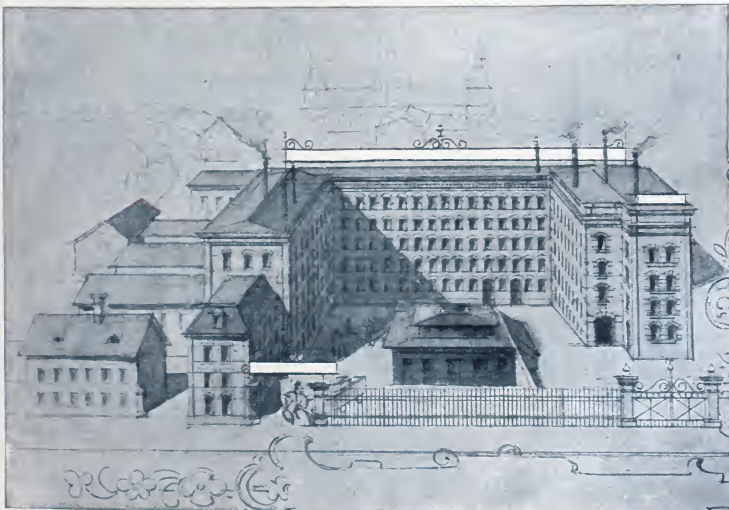
Highest award



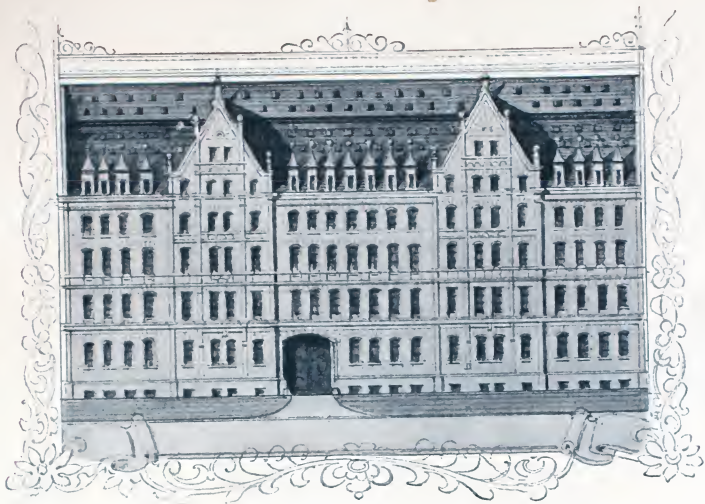
Barcelona 1888.



Factory.



Factory.



Warehouse and Offices.



Factory and Warehouse.

❖ INSTRUCTIVE ❖
OPTICAL TOYS.



Magic Lanterns

Dissolving view Apparati. ❖ Sciopticons.

Cinematographs.

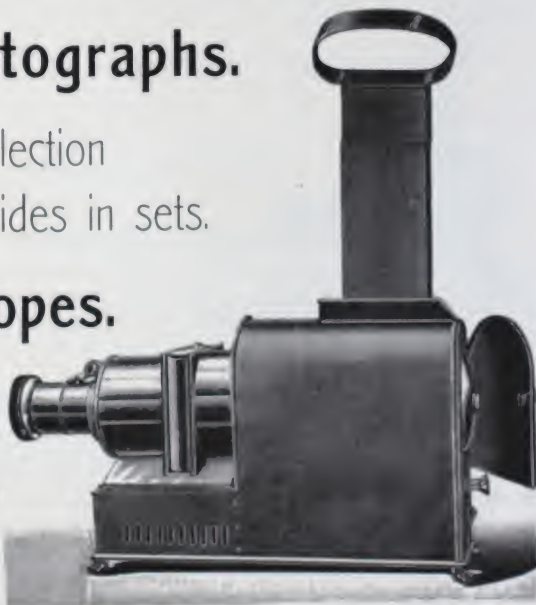
Large Collection
of new slides in sets.

Stereoscopes.



Magnifying glasses.

Reading glasses.



When starting the manufacture of *Magic Lanterns* we made a special point of using for this speciality only

an excellent and effective Optic.

This principle, which we have adhered to even in the manufacture of our cheapest Lanterns, we have to thank, that our goods are not only everywhere appreciated but also find preference to the competition manufacture.

Through our continual endeavours we have succeeded in bringing our Lanterns to a fine state of perfection, and through a correct Optic

sharp, distinct and large pictures are produced.

In *Cinematographs* we are bringing forth various new sorts this year, which are partly constructed after an entirely new principle. As a special advantage of this new system we might mention

the excellent reproduction of living pictures

with an almost

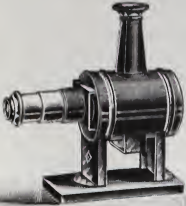
noiseless working.

Our collection of *Magic Lantern Slides* we have now enlarged, amongst other series, with a new (second) set of artistic pictures, which like the first serie were sketched and painted by a well known artist. We have also supplemented our collection through a number of other series of slides.

The section "*Stereoscopes*" etc. has also been enlarged through a number of new patterns, the finish of which is in every respect strong and elegant. For these optical apparati we have also used only very finely ground lenses.

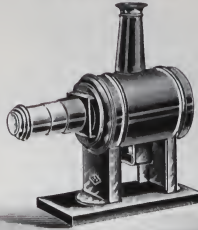
Magic Lanterns.

“Gnome”



100/3

“Mignon”



140/3

“Puck”

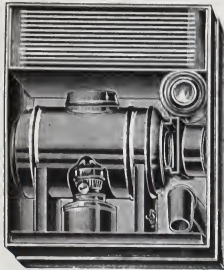


160/3

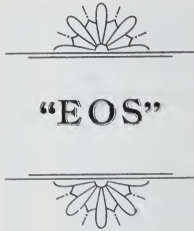
Magic Lanterns

japanned red or black, with oil lamp, mounted on wooden board, packed in strong card-board box

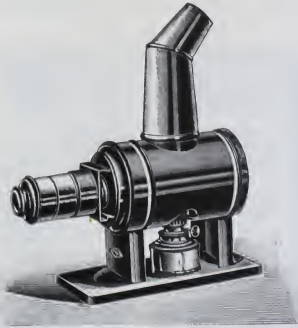
100/3	“Gnome”, small, slides 1 1/8 in. wide, lens 1 in. diam. with 6 glass slides	each Mk. —.50
140/3	“Mignon”, medium, » 1 1/8 » » » 1 » » » 6 »	» » —.70
160/3	“Puck”, large, » 1 1/8 » » » 1 » » » 12 » »	» » —.85



200 practical packing



“EOS”



200

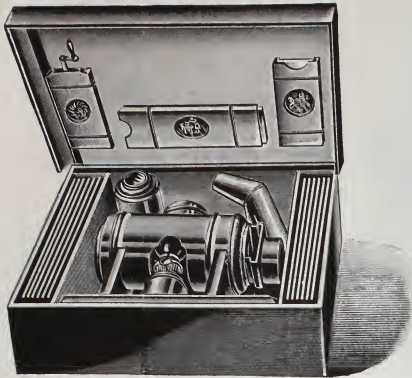
Magic Lantern “Eos”

finely japanned red or black, with petroleum lamp, mounted on wooden board, in elegant card-board box (practical packing) with 12 fine glass slides, (Slides in separate grooved box).

200/3	Glass slides	1 1/8 in. wide,	wood	pictures	— in. wide,	lens	1 in. diam.	. . .	each Mk.
» 3 1/2	» »	1 3/8 » » »	» »	» — » »	» » »	1 1/8 » »	» » »	» »	1.60
» 4	» »	1 9/16 » » »	» »	» 1 3/8 » » »	» » »	1 3/8 » »	» » »	» »	2.20
» 4 1/2	» »	1 3/4 » » »	» »	» 1 1/2 » » »	» » »	1 1/2 » »	» » »	» »	2.50
» 5	» »	2 » » » »	» »	» 1 3/4 » » »	» » »	1 3/4 » »	» » »	» »	3.05
» 6	» »	2 3/8 » » »	» »	» 2 » » » »	» » »	2 » » »	» » »	» »	3.80
» 7	» »	2 3/4 » » »	» »	» 2 3/8 » » »	» » »	2 1/4 » »	» » »	» »	4.85
» 8	» »	3 1/8 » » »	» »	» 2 3/4 » » »	» » »	2 3/8 » »	» » »	» »	5.85

Large Assortment of Extra Slides for Magic Lanterns see section “Lantern Slides”.

"Aurora"



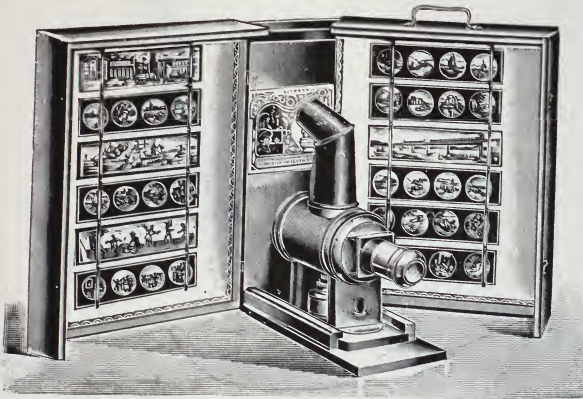
400 Lantern Form as No. 200

Magic Lantern "Aurora"

finely japanned red or black, with petroleum lamp, 12 fine glass slides, 1 Chromatropé, 1 movable landscape & 1 comical moving picture in wooden frame, packed in fine covered box

- | | | |
|--------------------|--|----------|
| 400/4 | Slides $1\frac{3}{16}$ in. wide, wood pictures | |
| | $1\frac{3}{8}$ in. wide, lens $1\frac{3}{8}$ in. diam., each | Mk. 2.70 |
| » /4 $\frac{1}{2}$ | Slides $1\frac{3}{4}$ in. wide, wood pictures | |
| | $1\frac{1}{2}$ in. wide, lens $1\frac{1}{2}$ in. diam., each | » 3.10 |
| » /5 | Slides 2 inch. wide, wood pictures | |
| | $1\frac{3}{4}$ in. wide, lens $1\frac{3}{4}$ in. diam., each | » 4.25 |
| » /6 | Slides $2\frac{3}{8}$ in. wide, wood pictures | |
| | 2 in. wide, lens 2 in. diam. . . . each | » 5.35 |
| » /7 | Slides $2\frac{3}{4}$ in. wide, wood pictures | |
| | $2\frac{3}{8}$ in. wide, lens $2\frac{1}{8}$ in. diam., each | » 6.25 |
| » /8 | Slides $3\frac{1}{8}$ in. wide, wood pictures | |
| | $2\frac{3}{4}$ in. wide, lens $2\frac{3}{8}$ in. diam., each | » 7.25 |

"Astra"



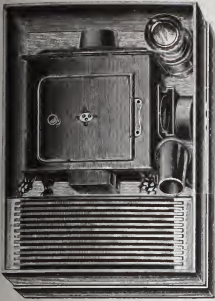
550

Magic Lantern "Astra"

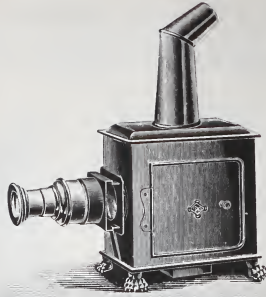
finely japanned red or black
with petroleum lamp
and 12 fine glass Slides
well packed and practically
arranged
in elegant wooden box
with flap doors

- | | | | |
|---------------------|--|---|----------|
| 550/3 $\frac{1}{2}$ | Glass slides $1\frac{3}{8}$ in. wide, wood pictures | — in. wide, lens $1\frac{1}{8}$ in. diam., . . . each | Mk. 2.45 |
| » /4 | » » $1\frac{9}{16}$ » » » » $1\frac{3}{8}$ » » » $1\frac{3}{8}$ » » . . . » | | » 3.25 |
| » /4 $\frac{1}{2}$ | » » $1\frac{3}{4}$ » » » » $1\frac{9}{16}$ » » » $1\frac{9}{16}$ » » . . . » | | » 3.85 |
| » /5 | » » 2 » » » » $1\frac{3}{4}$ » » » $1\frac{3}{4}$ » » . . . » | | » 4.75 |
| » /6 | » » $2\frac{3}{8}$ » » » » 2 » » » 2 » » . . . » | | » 5.75 |

Large assortment of Extra Slides for Magic Lanterns see section "Lantern Slides".



Packing for No. 950



Shape of Lanterns 950, 1000, 1100



Packing for No. 1000 and 1100

Superfine Magic Lantern "Faust"

elegant shape polished Russian Iron, with petroleum lamp and 12 fine Glass slides, practically arranged, (Slides in separate grooved box) packed in elegant card-board box.

950/3 1/2	Glass slides	1 3/8 in. wide,	wood pictures	— in. wide,	lens 1 1/8 in. diam.	each	Mk.	2.10
> /4	>	> 1 9/16 >	>	>	> 1 3/8 >	>	>	>	2.75
> /4 1/2	>	> 1 3/4 >	>	>	> 1 9/16 >	>	>	>	3.25
> /5	>	> 2 >	>	>	> 1 3/4 >	>	>	>	4.25
> /6	>	> 2 3/8 >	>	>	> 2 >	>	>	>	5.—
> /7	>	> 2 3/4 >	>	>	> 2 3/8 >	>	>	>	6.25
> /8	>	> 3 1/8 >	>	>	> 2 3/4 >	>	>	>	7.—

Superfine Magic Lantern "Mephisto"

elegant shape, polished Russian Iron, with petroleum lamp and 12 fine Glass slides packed in elegant box with picture holder.

1000/3 1/2	Glass slides	1 3/8 in. wide,	wood pictures	— in. wide,	lens 1 1/8 in. diam.	each	Mk.	2.50
> /4	>	> 1 9/16 >	>	>	> 1 3/8 >	>	>	>	3.—
> /4 1/2	>	> 1 3/4 >	>	>	> 1 9/16 >	>	>	>	3.50
> /5	>	> 2 >	>	>	> 1 3/4 >	>	>	>	4.50
> /6	>	> 2 3/8 >	>	>	> 2 >	>	>	>	5.50
> /7	>	> 2 3/4 >	>	>	> 2 3/8 >	>	>	>	6.65
> /8	>	> 3 1/8 >	>	>	> 2 3/4 >	>	>	>	7.75

Superfine Magic Lantern "Famulus"

elegant shape, polished Russian Iron, with petroleum lamp, 12 fine Glass slides, 1 Chromatope, 1 moving landscape and 1 comical moving picture packed in elegant box with picture holder.

1100/4 1/2	Glass slides	1 3/4 in. wide,	wood pictures	1 9/16 in. wide,	lens 1 9/16 in. diam.	each	Mk.	4.50
> /5	>	> 2 >	>	>	> 1 3/4 >	>	>	>	5.75
> /6	>	> 2 3/8 >	>	>	> 2 >	>	>	>	7.—
> /7	>	> 2 3/4 >	>	>	> 2 3/8 >	>	>	>	8.20
> /8	>	> 3 1/8 >	>	>	> 2 3/4 >	>	>	>	9.70

Large assortment of extra Slides for Magic Lanterns see section "Lantern Slides".

The latest Globe Magic Lantern "Bosco" "Improved Climax System"

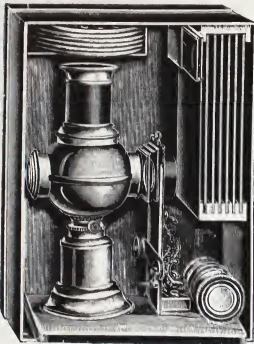
This lantern is made entirely from polished brass, and is fitted with a new mechanical disc turner, and practical arrangement for long slides. Mounted on polished wood board.

The convenient form of this new lantern, and the extremely efficient construction of our lenses, to give large and bright projections, will at all times procure a favourable reception for the "Bosco".

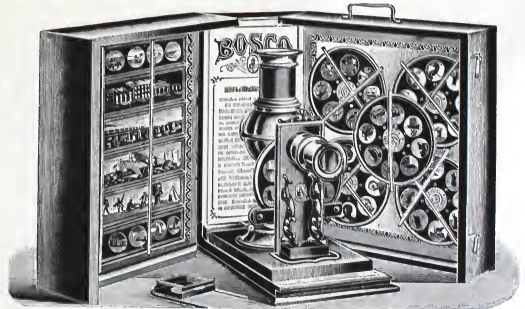


1450 & 1460

These improvements which we offer are of great importance and show up our "Bosco" very advantageously from the different "Climax" systems. The mechanical turner secures an even and easy movement for the discs, while the picture slot, for the long slides, is so arranged that it can be adjusted before the lens opening by a very slight pressure.



Packing for 1450 "Bosco"



Packing for 1460 "Bosco"

Packed in extra strong **card-board boxes**, with 6 glass Slides, and 6 Discs.

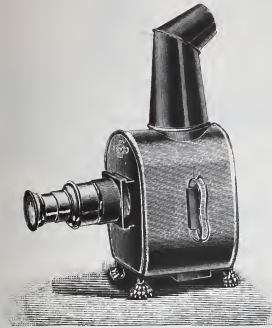
1450	$3\frac{1}{4}$	Glass slides	$1\frac{3}{8}$	in. wide,	wood pictures	$1\frac{1}{8}$	in. wide,	discs	4	in. diam. (uncovered),	lens	$1\frac{1}{2}$	in. diam.,	each	Mk.	4.20	
>	4	>	>	>	>	>	>	>	>	>	>	>	>	>	>	>	5.50
>	$4\frac{1}{2}$	>	>	>	>	>	>	>	>	>	>	>	>	>	>	>	7.
>	5	>	>	>	>	>	>	>	>	>	>	>	>	>	>	>	9.65

Packed in fine strong **wood box**, with flap doors and handle, with 6 long glass Slides, 6 Discs, 2 comical moving pictures and 1 Chromatropé.

1460	$3\frac{1}{4}$	Glass slides	$1\frac{3}{8}$	in. wide,	wood pictures	$1\frac{1}{8}$	in. wide,	discs	4	in. diam. (uncovered),	lens	$1\frac{1}{2}$	in. diam.,	each	Mk.	6.20	
>	4	>	>	>	>	>	>	>	>	>	>	>	>	>	>	>	7.50
>	$4\frac{1}{2}$	>	>	>	>	>	>	>	>	>	>	>	>	>	>	>	9.50
>	5	>	>	>	>	>	>	>	>	>	>	>	>	>	>	>	11.-

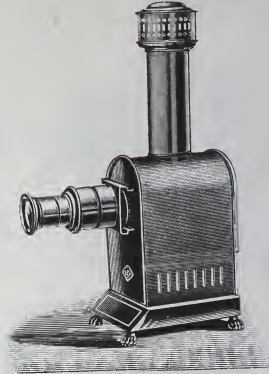
Large assortment of extra Slides for Magic Lanterns see Section "Lantern Slides".

“Silvana”



600

“Preciosa”



1540 with Round Burner

Superfine Magic Lantern “Silvana”

finely japanned black or red, with Petroleum lamp, packed in elegant wood box, with 12 fine glass slides, 1 Chromatope, 1 moving landscape and 1 comical moving picture in wood frame.

600/4 1/2	Slides	1 3/4 in. wide, wood	pictures	1 9/16 in. wide, lens	1 9/16 in. diam.	each	Mk.	4.30
> /5	> 2	> > >	> 1 3/4	> > >	> 1 3/4	> >	>	5.10
> /6	> 2 3/8	> > >	> 2	> > >	> 2	> >	>	6.20
> /7	> 2 3/4	> > >	> 2 3/8	> > >	> 2 1/8	> >	>	7.35
> /8	> 3 1/8	> > >	> 2 3/4	> > >	> 2 3/8	> >	>	8.75
> /9	> 3 1/2	> > >	> 3 1/8	> > >	> 2 1/2	> >	>	10.50

Superfine Magic Lantern “Preciosa”

with excellent optics

finely japanned with gold decorations, brass chimney, Petroleum lamp with round burner and 12 extra finely finished, long glass slides, (artistic serie), 1 Chromatope, 1 comical moving picture and 1 moving landscape, in elegant box with picture holder.

1540/4	Slides	1 9/16 in. wide, wood	pictures	1 3/8 in. wide, lens	1 3/8 in. diam.	Round Burner Lamp	8" each	Mk.	7.—
> /4 1/2	> 1 3/4	> > >	> 1 9/16	> > >	> 1 9/16	> >	>	8" >	8.—
> /5	> 2	> > >	> 1 3/4	> > >	> 1 3/4	> >	>	10" >	9.—
> /6	> 2 3/8	> > >	> 2	> > >	> 2	> >	>	10" >	10.—
> /7	> 2 3/4	> > >	> 2 3/8	> > >	> 2 1/8	> >	>	10" >	12.50
> /8	> 3 1/8	> > >	> 2 3/4	> > >	> 2 3/8	> >	>	12" >	15.—
> /9	> 3 1/2	> > >	> 3 1/8	> > >	> 2 1/2	> >	>	12" >	16.50

Large assortment of Extra Slides for Magic Lanterns see section “Lantern Slides”.

“Eden”



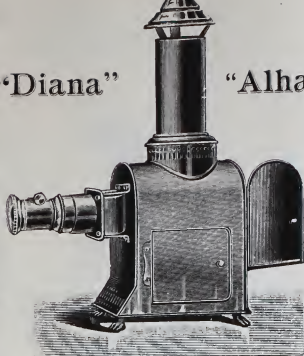
1200

“Diana”



Lamp for No. 1200 & 1300

“Alhambra”



1300 & 3000/9

Superfine Magic Lantern “Eden”

elegant shape, polished Russian Iron, with duplex burner, 12 fine covered glass slides, 1 Chromatope, 1 comical moving picture and 1 moving landscape, with fine brass objective.

1200/5	Glass slides	2	in. wide,	wood pictures	2	in. wide,	lens	1 3/4	in. diam.,	each	Mk.	8.75	
> /6	>	>	2 3/8	>	>	>	2 3/8	>	>	2	>	>	>	10.85
> /7	>	>	2 3/4	>	>	>	2 3/4	>	>	2 1/8	>	>	>	12.75
> /8	>	>	3 1/8	>	>	>	3 1/8	>	>	2 3/8	>	>	>	16.—
> /9	>	>	3 1/2	>	>	>	3 1/2	>	>	2 1/2	>	>	>	19.50
> /10	>	>	4	>	>	>	4	>	>	2 3/4	>	>	>	22.50

Superfine Magic Lantern “Diana”

elegant shape, polished Russian Iron, with duplex burner, 12 fine covered glass slides, 1 Chromatope, 1 comical moving picture, 1 moving landscape, and fine brass objective with cog wheel.

1300/5	Glass slides	2	in. wide,	wood pictures	2	in. wide,	lens	1 3/4	in. diam.,	each	Mk.	12.50
> /6	>	>	2 3/8	>	>	>	2 3/8	>	>	2	>	>	15.75
> /7	>	>	2 3/4	>	>	>	2 3/4	>	>	2 1/8	>	>	18.75
> /8	>	>	3 1/8	>	>	>	3 1/8	>	>	2 3/8	>	>	22.—
> /9	>	>	3 1/2	>	>	>	3 1/2	>	>	2 3/4	>	>	26.50

3000/9 Fine Sciopticon “Alhambra”

polished Russian Iron, with fine achromatic front lens, cog wheel, Condenser 2 3/4 in. diameter, with intensifying petroleum lamp (duplex burner), 12 fine, covered glass slides, 3 1/2 in. wide, 1 Chromatope, 1 comical moving picture and 1 moving landscape

each Mk. 33.—

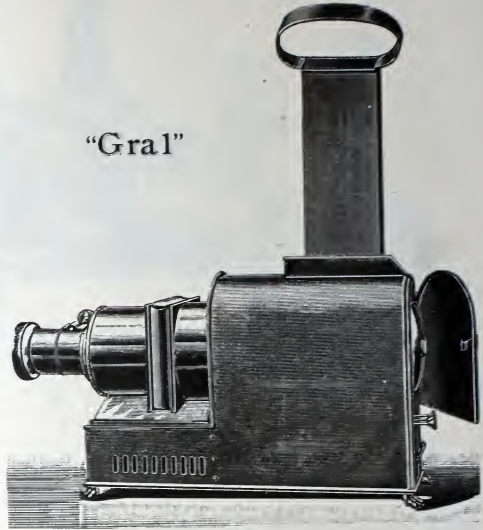
Large Assortment of Extra Slides for Magic Lanterns see section “Lantern Slides”.

"Minerva"



3200/11

"Gral"



3400/11

3200/11 Superfine Sciopticon "Minerva"

polished Russian Iron with fine achromatic front lens with cog wheel, Condenser 4 in. diam., with intensifying petroleum lamp (duplex burner) 12 fine, covered glass slides, $4\frac{3}{8}$ in. wide, 1 Chromatope, 1 comical moving picture, 1 moving landscape

complete, each Mk. 45.—

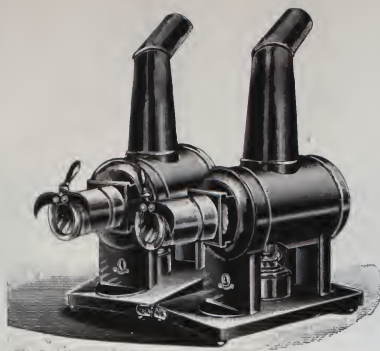
3400/11 Extrafine Sciopticon "Gral"

polished Russian Iron, with brass fittings and extrafine achromatic front lens with cog wheel, Condenser 4 in. diam., with three burner American petroleum lamp, very intensifying, with 12 fine, covered slides $4\frac{3}{8}$ in. wide, 1 Chromatope, 1 comical moving picture and 1 movable landscape

complete, each Mk. 65.—

Large assortment of Extra Slides for Magic Lanterns see section "Lantern Slides".

"Union"



1800

Dissolving View Apparatus

finely japanned, mounted on polished wood boards, with polished brass objectives with dissolvers, Petroleum lamps, **24 fine, short, covered glass slides** and **2 Chromatropes, 1 moving landscape, 1 comical moving picture and 1 snowing machine** in wood frames, packed in strong wood box

1800	5	Glass slides	2	in. wide,	wood pictures	1 3/4	in. wide,	lens	1 3/4	in. diam.	each	Mk.	10.85
>	6	>	>	>	>	>	>	>	>	>	>	>	>	12.25
>	7	>	>	>	>	>	>	>	>	>	>	>	>	13.75
>	8	>	>	>	>	>	>	>	>	>	>	>	>	15.50

"Alliance"



1900

Dissolving View Apparatus

oval shape, finely japanned, mounted on polished wood boards
brass objectives with automatic dissolvers, Petroleum lamps, **24 fine, short, covered glass slides** and **2 Chromatropes, 2 comical moving pictures, 1 moving landscape and 1 snowing machine** in wood frames, packed in strong elegant wooden box

1900	5	Glass slides	2	in. wide,	wood pictures	1 3/4	in. wide,	lens	1 3/4	in. diam.	each	Mk.	14.75
>	6	>	>	>	>	>	>	>	>	>	>	>	>	16.85
>	7	>	>	>	>	>	>	>	>	>	>	>	>	19.75
>	8	>	>	>	>	>	>	>	>	>	>	>	>	21.85

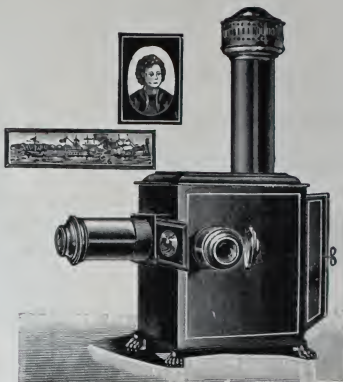
Large Assortment of extra Slides for Magic Lanterns see section "Lantern Slides".

“Talisman”



2000

“Phaenomena”



2800/5

Dissolving View Apparatus “Talisman”

finely finished, mounted on wood boards with sliding adjuster and screw, **Polished Russian Iron**, with **duplex petroleum lamp**, fine brass objectives with cog-wheel, with automatic dissolvers, **24 fine short covered glass slides**, **2 Chromatropes**, **2 round moving pictures**, **2 landscapes**, **2 changing pictures** and **1 Snow machine**.

2000/6	width of glass and wood slides	2 ³ / ₈	in.	diam. of Lens	2	in.	each	Mk.	38.50
> 7	> > > > >	2 ³ / ₄	>	>	2 ³ / ₁₆	>	>	>	48.—
> 8	> > > > >	3 ³ / ₁₆	>	>	2 ³ / ₈	>	>	>	56.—
> 9	> > > > >	3 ¹ / ₂	>	>	2 ¹ / ₄	>	>	>	66.—

2800/5 “Phaenomena”

Combination Megascop and Magic Lantern Apparatus for projecting opaque articles.

With this apparatus any required Photograph (Carte de Visite), coloured opaque views, insects, the works of a watch, coins etc. can be projected on a screen, magnified about 15 to 20 times their original size.

The apparatus can also be used as a **Magic Lantern**, for projecting transparent glass slides.

Very strong and elegant finish, comprising: 24 fine, coloured, opaque pictures, and for the **Magic Lantern**, 12 double covered slides, 2 in. wide, 3 changing pictures, in tin frames, 1 Chromatrope and 1 comical lever picture in wood frames, 2 in. wide.

Packed complete in wood box

each Mk. 11.50

Large assortment of slides for these Lanterns see section “Lantern Slides”.

 Cinematograph



1650

 "METEOR"

1650 "Meteor", Combination Cinematograph and Magic Lantern

with excellent optical effect, strong, reliable Film Transporter, and 3 long coloured Films each Mk. 8.25

Camera: made of strong Tin, japanned red, with knee chimney.

Illumination: Petroleum Lamp with 5" burner and reflector.

Transporter: strong and reliable construction, for all Films with "Edison Perforations".

Films: with each Cinematograph 3 finely coloured Films are enclosed.

Optic: consists of Condenser and 2 ground objective Lenses — Objective finely nickelled.

Magic lantern: arranged for glass slides of $1\frac{9}{16}$ in. width, or wood pictures of $1\frac{3}{8}$ in. width.

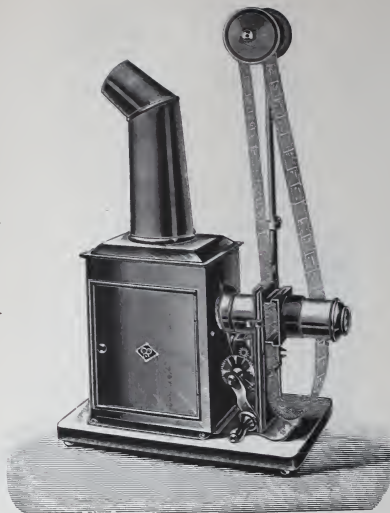
Strong and elegant packing.

*Our Cinematographs can at any time be used as Magic Lanterns.
The alteration can be made during a performance without
any interruption.*

For coloured Films fitting to these Cinematographs see page 177.

For Magic Lantern slides fitting to above Cinematographs see section
"Lantern Slides".

 Cinematograph



 "MONOPOLE"

1700

1700 "Monopole". **Combination Cinematograph and Magic Lantern**
 with excellent optical effect and reliable Film Transporter, with 6 long coloured
 Films and 12 long Glass slides each Mk. 13.50

Camera: made of strong Tin, japanned red, with knee chimney.

Illumination: intensive Petroleum Lamp with 8" round burner and fine Reflector.

Transporter: strong and reliable construction, for all Films with "Edison Perforations".

Films: with each Cinematograph 6 finely coloured Films are enclosed.

Optic: consists of Condenser and 2 finely ground objective Lenses. — Objective finely nickelled.

Magic lantern: arranged for Glass slides of $1\frac{9}{16}$ in. width, or wood pictures of $1\frac{3}{8}$ in. width.

Glass slides: 12 fine long glass slides $1\frac{3}{16}$ in. width are enclosed.

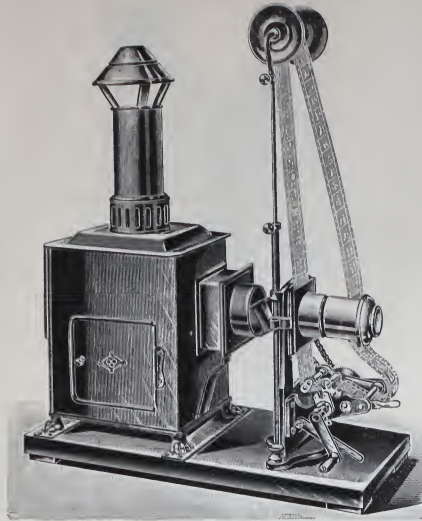
Strong and elegant packing.

*Our Cinematographs can at any time be used as Magic Lanterns.
 The alteration can be made during a performance without
 any interruption.*

For prices and list of coloured and photographic films see page 177.

For Magic Lantern slides fitting to above Cinematographs see section
"Lantern Slides".

 Cinematograph



1750

 "EXCELSIOR"

1750 "Excelsior"
 extra fine combination Cinematograph and Magic Lantern

with excellent optical effect, new almost noiselessly working Film Transporter, with 6 long coloured Films, 1 fine original photographic Film and 12 long double covered Lantern Slides each Mk. 35.—

Camera: made of strong Russian Iron.

Illumination: very intensive Petroleum Lamp with 10" duplex burner and fine reflector.

Transporter: fine mechanical working, with almost noiseless action, very reliable finish, for all Films with "Edison Perforations".

Films: with each Cinematograph 1 photographic film and 6 fine coloured films are enclosed.

Optic: very excellent effect; objective consisting of double condenser and 2 finely ground objective Lenses. Objective finely nickelled.

Magic lantern: arranged for glass slides of $2\frac{3}{8}$ inch. width, or wood pictures of 2 inch. width.

Glass Slides: 12 fine long glass slides of $2\frac{3}{8}$ inch. width, are enclosed.

Strong and elegantly packed.

*Our Cinematographs can at any time be used as Magic Lanterns.
 The alteration can be made during a performance without any
 interruption.*

For prices and list of coloured and photographic Films see page 177.

For Magic Lantern slides fitting to above Cinematographs see section
 "Lantern Slides".

Films

(Picture strips for Cinematographs.)

Coloured Films

fitting to Cinematographs Nos. 1650, 1700 and 1750 with "Edison Perforations".

6638/1	Serie 1		per serie	of 6 strips	Mk. 3.25
> /2	> 2		> > >	6 >	3.25
> /3	> 3		> > >	6 >	3.25
> /4	> 4		> > >	6 >	3.25

6639 Original Photographic Films

fitting to Cinematographs No. 1700 and 1750 with "Edison Perforations".

~~~~~ Each Film is packed in a separate box ~~~~~

each Mk. 3.—

These "photographic Films" produce a very fine effect, and represent interesting and partly comical scenes. ~~~~~

### List of photographic Films:

- |                                                                                                                                                                                                                                                                                                                                                                                                                         |                                                                                                                                                                                                                                                                                                                                                                                                                                             |                                                                                                                                                                                                                                                                                                                                                                                                                                                 |
|-------------------------------------------------------------------------------------------------------------------------------------------------------------------------------------------------------------------------------------------------------------------------------------------------------------------------------------------------------------------------------------------------------------------------|---------------------------------------------------------------------------------------------------------------------------------------------------------------------------------------------------------------------------------------------------------------------------------------------------------------------------------------------------------------------------------------------------------------------------------------------|-------------------------------------------------------------------------------------------------------------------------------------------------------------------------------------------------------------------------------------------------------------------------------------------------------------------------------------------------------------------------------------------------------------------------------------------------|
| <ol style="list-style-type: none"> <li>1. The merry dwarf.</li> <li>2. Clown as conjurer.</li> <li>3. Transformation leap.</li> <li>4. Quick changer.</li> <li>5. Acrobats.</li> <li>6. Clown and Columbine.</li> <li>7. The Lions Cage.</li> <li>8. In the swimming baths.</li> <li>9. H. I. M. The Czar.</li> <li>10. Sailors Dance.</li> <li>11. Gymnast on the Bars.</li> <li>12. Passing of a War Ship.</li> </ol> | <ol style="list-style-type: none"> <li>13. Singalese Bathing.</li> <li>14. Pompadour Quadrille.</li> <li>15. Arabian Dance.</li> <li>16. Spanish Dance.</li> <li>17. Japanese Wrestler.</li> <li>18. Cavalry Parade.</li> <li>19. Infantry Marching.</li> <li>20. A Herd of Cattle.</li> <li>21. Cavalry, taking an obstacle.</li> <li>22. China and the Powers.</li> <li>23. The Astronomer.</li> <li>24. Bride and Bridegroom.</li> </ol> | <ol style="list-style-type: none"> <li>25. A terrible night.</li> <li>26. The transforming man.</li> <li>27. The angry wife.</li> <li>28. The bewitched bride.</li> <li>29. Battle of confetti.</li> <li>30. The painter and his model.</li> <li>31. The unlucky wine.</li> <li>32. The white nigger.</li> <li>33. An imaginary illness.</li> <li>34. The merry fireman.</li> <li>35. The Masked Ball.</li> <li>36. A merry history.</li> </ol> |
|-------------------------------------------------------------------------------------------------------------------------------------------------------------------------------------------------------------------------------------------------------------------------------------------------------------------------------------------------------------------------------------------------------------------------|---------------------------------------------------------------------------------------------------------------------------------------------------------------------------------------------------------------------------------------------------------------------------------------------------------------------------------------------------------------------------------------------------------------------------------------------|-------------------------------------------------------------------------------------------------------------------------------------------------------------------------------------------------------------------------------------------------------------------------------------------------------------------------------------------------------------------------------------------------------------------------------------------------|

### Notice:

Films can neither be exchanged nor taken back.

*We hold a stock of all photographic Films, but in case in the season, one or other of the subjects should be sold out and cannot be got round in time, we reserve the right of sending another number as substitute.*

# Glass Slides for Magic Lanterns.

When ordering extra Glass slides or pictures in tin or wood frames to any Lantern or Apparatus kindly note:

The line numbers of the **Glass slides** and **pictures in tin frames** correspond to the line numbers of all Magic Lanterns. For instance all glass slides size 5 will fit the Lanterns size 5 etc.

On the other hand the **pictures in wood frames** do not correspond with the line numbers of the Lanterns, and when ordering such pictures in wood frames it is necessary to give the exact size of such wood pictures as are given with the Lanterns.

*All the following Lantern Slides (with the exception of the photographic series) we deliver also*

*as Gelatine Pictures*

*and we shall be pleased to forward our special price list on application.*

## long Glass Slides

finely finished with striking effect of colour

6 different Series of 12 Slides (Series I, II, III, IV, V and VI; Serie I is given with the Lanterns).

*The series comprise a rich assortment of objects and views such as:*

*Children's scenes, comical pictures, heads of animals, landscapes, sport pictures fire brigade, ships, north pole scenes, the seasons, caricatures etc.*



from serie I



from serie II



from serie I



from serie V

## long Glass Slides

finely finished in 6 series.

(Series I, II, III, IV, V, VI; Series I is given with the lanterns)

|          | size 3 | 3 1/2 | 4      | 4 1/2 | 5     | 6     | 7     | 8      | 9     | 10 | 11 cm          |
|----------|--------|-------|--------|-------|-------|-------|-------|--------|-------|----|----------------|
| pictures | 1 9/16 | 1 9/8 | 1 7/16 | 1 3/4 | 2     | 2 3/8 | 2 3/4 | 3 3/16 | 3 1/2 | 4  | 4 3/8 in. wide |
|          | 4 1/4  | 5     | 6      | 7     | 7 1/4 | 8     | 8 3/4 | 9 1/2  | 11    | 12 | 12 in. long    |

7695 without cover glass Mk. —.33 —.50 —.60 —.80 1.— 1.35 1.75 2.30 3.— 4.— 4.75 per Serie  
 7696 with cover glass > —.— —.— .90 1.30 1.50 2.— 2.50 3.— 4.— 5.50 6.50 > >

# Long Slides for Magic Lanterns.

**Excellent artistic finish, very humorous**

Children's scenes in specially striking colours.

## Artistic Series No. I.



Slide 1



Slide 5



Slide 7



Slide 9

1 Serie = 12 slides, each with 4 pictures:

- |                       |                                 |
|-----------------------|---------------------------------|
| 1. The hunted Thief.  | 7. Quarrelsome Children.        |
| 2. Caricatures.       | 8. Punished revenge.            |
| 3. Comical Scenes.    | 9. The naughty boys.            |
| 4. Animal Scenes.     | 10. The peasant and the Doctor. |
| 5. Pig and Dwarf.     | 11. The clowns and the Bottle.  |
| 6. The unlucky rider. | 12. The long nose.              |

|                                 |                     |                           |                          |                       |                 |
|---------------------------------|---------------------|---------------------------|--------------------------|-----------------------|-----------------|
| <b>6787/3</b>                   | without cover glass | $1\frac{3}{16}$ in. wide, | $4\frac{3}{8}$ in. long. | per serie = 12 slides | <b>Mk. —.50</b> |
| » $3\frac{1}{2}$ / <sub>a</sub> | »                   | » $1\frac{3}{8}$ »        | » 5 »                    | » = 12 »              | » —.65          |
| » $4$ / <sub>a</sub>            | »                   | » $1\frac{9}{16}$ »       | » 6 »                    | » = 12 »              | » —.80          |
| » $4\frac{1}{2}$ / <sub>a</sub> | »                   | » $1\frac{3}{4}$ »        | » $6\frac{3}{4}$ »       | » = 12 »              | » 1.—           |
| » $5$ / <sub>a</sub>            | »                   | » 2 »                     | » 7 »                    | » = 12 »              | » 1.25          |
| » $6$ / <sub>a</sub>            | »                   | » $2\frac{3}{8}$ »        | » 8 »                    | » = 12 »              | » 1.60          |
| » $7$ / <sub>a</sub>            | »                   | » $2\frac{3}{4}$ »        | » $8\frac{3}{4}$ »       | » = 12 »              | » 2.10          |
| » $8$ / <sub>a</sub>            | »                   | » $3\frac{3}{16}$ »       | » $9\frac{1}{2}$ »       | » = 12 »              | » 2.60          |
| » $9$ / <sub>a</sub>            | »                   | » $3\frac{1}{2}$ »        | » 11 »                   | » = 12 »              | » 3.60          |
| » $10$ / <sub>a</sub>           | »                   | » 4 »                     | » 12 »                   | » = 12 »              | » 4.50          |
| <b>6788/4</b>                   | with cover glass    | $1\frac{3}{16}$ in. wide, | 6 in. long.              | per serie = 12 slides | <b>Mk. 1.10</b> |
| » $4\frac{1}{2}$ / <sub>a</sub> | »                   | » $1\frac{3}{4}$ »        | » $6\frac{3}{4}$ »       | » = 12 »              | » 1.45          |
| » $5$ / <sub>a</sub>            | »                   | » 2 »                     | » 7 »                    | » = 12 »              | » 1.70          |
| » $6$ / <sub>a</sub>            | »                   | » $2\frac{3}{8}$ »        | » 8 »                    | » = 12 »              | » 2.20          |
| » $7$ / <sub>a</sub>            | »                   | » $2\frac{3}{4}$ »        | » $8\frac{3}{4}$ »       | » = 12 »              | » 2.75          |
| » $8$ / <sub>a</sub>            | »                   | » $3\frac{3}{16}$ »       | » $9\frac{1}{2}$ »       | » = 12 »              | » 3.30          |
| » $9$ / <sub>a</sub>            | »                   | » $3\frac{1}{2}$ »        | » 11 »                   | » = 12 »              | » 4.50          |
| » $10$ / <sub>a</sub>           | »                   | » 4 »                     | » 12 »                   | » = 12 »              | » 5.75          |
| » $11$ / <sub>a</sub>           | »                   | » $4\frac{3}{8}$ »        | » 12 »                   | » = 12 »              | » 6.50          |

# Long Slides for Magic Lanterns.

Excellent artistic finish, very humorous

Children's Scenes in specially striking colours.

## Artistic Series No. II.



Slide 6



Slide 12



Slide 11



Slide 10

1 Serie = 12 slides, each with 4 pictures:

- |                              |                           |
|------------------------------|---------------------------|
| 1. Frog and Beetle.          | 7. The bad marksman.      |
| 2. The careless dwarf.       | 8. Punished insolence.    |
| 3. The Easter Hare.          | 9. The clumsy waiter.     |
| 4. Chimney-sweep and Baker.  | 10. Watchman and Snowman. |
| 5. The masher and the goat.  | 11. The chinaman in need. |
| 6. An interrupted tea-party. | 12. The unlucky Hat.      |

|                                 |                      |                                          |                                        |                       |          |
|---------------------------------|----------------------|------------------------------------------|----------------------------------------|-----------------------|----------|
| 8753/3                          | without cover glass, | 1 <sup>3</sup> / <sub>16</sub> in. wide, | 4 <sup>3</sup> / <sub>8</sub> in. long | per Serie = 12 slides | Mk. —.50 |
| » 3 <sup>1</sup> / <sub>2</sub> | » » »                | 1 <sup>7</sup> / <sub>8</sub> » »        | 5 » »                                  | = 12 » »              | — .65    |
| » 4                             | » » »                | 1 <sup>9</sup> / <sub>16</sub> » »       | 6 » »                                  | = 12 » »              | — .80    |
| » 4 <sup>1</sup> / <sub>2</sub> | » » »                | 1 <sup>9</sup> / <sub>4</sub> » »        | 6 <sup>3</sup> / <sub>4</sub> » »      | = 12 » »              | 1.—      |
| » 5                             | » » »                | 2 » »                                    | 7 » »                                  | = 12 » »              | 1.25     |
| » 6                             | » » »                | 2 <sup>3</sup> / <sub>8</sub> » »        | 8 » »                                  | = 12 » »              | 1.60     |
| » 7                             | » » »                | 2 <sup>3</sup> / <sub>4</sub> » »        | 8 <sup>3</sup> / <sub>4</sub> » »      | = 12 » »              | 2.10     |
| » 8                             | » » »                | 3 <sup>3</sup> / <sub>16</sub> » »       | 9 <sup>1</sup> / <sub>2</sub> » »      | = 12 » »              | 2.60     |
| » 9                             | » » »                | 3 <sup>1</sup> / <sub>2</sub> » »        | 11 » »                                 | = 12 » »              | 3.60     |
| » 10                            | » » »                | 4 » »                                    | 12 » »                                 | = 12 » »              | 4.50     |
| 8754/4                          | with cover glass,    | 1 <sup>9</sup> / <sub>16</sub> » »       | 6 » »                                  | = 12 » »              | 1.10     |
| » 4 <sup>1</sup> / <sub>2</sub> | » » »                | 1 <sup>9</sup> / <sub>4</sub> » »        | 6 <sup>3</sup> / <sub>4</sub> » »      | = 12 » »              | 1.45     |
| » 5                             | » » »                | 2 » »                                    | 7 » »                                  | = 12 » »              | 1.70     |
| » 6                             | » » »                | 2 <sup>3</sup> / <sub>8</sub> » »        | 8 » »                                  | = 12 » »              | 2.20     |
| » 7                             | » » »                | 2 <sup>3</sup> / <sub>4</sub> » »        | 8 <sup>3</sup> / <sub>4</sub> » »      | = 12 » »              | 2.75     |
| » 8                             | » » »                | 3 <sup>3</sup> / <sub>16</sub> » »       | 9 <sup>1</sup> / <sub>2</sub> » »      | = 12 » »              | 3.30     |
| » 9                             | » » »                | 3 <sup>1</sup> / <sub>2</sub> » »        | 11 » »                                 | = 12 » »              | 4.50     |
| » 10                            | » » »                | 4 » »                                    | 12 » »                                 | = 12 » »              | 5.75     |
| » 11                            | » » »                | 4 <sup>3</sup> / <sub>8</sub> » »        | 12 » »                                 | = 12 » »              | 6.50     |

# Long Slides for Magic Lanterns.

## New Fairy Tales.



from: Little Snow-white.



from: Little Red Ridinghood.

Original Serie, comprising 2 slides each with 4 pictures from each of the following Fairy Tales:  
**Red Ridinghood, Snow-white, Hop o'my Thumb, Hansel and Gretel, Sleeping Beauty and Cinderella, with Text,** very finely finished serie.

|      |                               |                      |                                          |                                                  |                       |          |
|------|-------------------------------|----------------------|------------------------------------------|--------------------------------------------------|-----------------------|----------|
| 9275 | 3                             | without cover glass, | 1 <sup>9</sup> / <sub>16</sub> in. wide, | 4 <sup>9</sup> / <sub>8</sub> in. long . . . . . | per Serie = 12 Slides | Mk. —.50 |
| >    | 3 <sup>1</sup> / <sub>2</sub> | >                    | >                                        | 5                                                | >                     | > —.55   |
| >    | 4                             | >                    | 1 <sup>9</sup> / <sub>16</sub>           | 6                                                | >                     | > —.65   |
| >    | 4 <sup>1</sup> / <sub>2</sub> | >                    | >                                        | 6 <sup>3</sup> / <sub>4</sub>                    | >                     | > —.90   |
| >    | 5                             | >                    | 2                                        | 7                                                | >                     | > 1.20   |
| >    | 6                             | >                    | 2 <sup>3</sup> / <sub>8</sub>            | 8                                                | >                     | > 1.50   |
| >    | 7                             | >                    | 2 <sup>3</sup> / <sub>4</sub>            | 8 <sup>3</sup> / <sub>4</sub>                    | >                     | > 1.95   |
| >    | 8                             | >                    | 3 <sup>9</sup> / <sub>16</sub>           | 9 <sup>1</sup> / <sub>2</sub>                    | >                     | > 2.60   |
| >    | 9                             | >                    | 3 <sup>1</sup> / <sub>2</sub>            | 11                                               | >                     | > 3.40   |
| 9278 | 4                             | with cover glass,    | 1 <sup>9</sup> / <sub>16</sub> in. wide, | 6 in. long . . . . .                             | = 12                  | — .95    |
| >    | 4 <sup>1</sup> / <sub>2</sub> | >                    | >                                        | 6 <sup>3</sup> / <sub>4</sub>                    | >                     | > 1.35   |
| >    | 5                             | >                    | 2                                        | 7                                                | >                     | > 1.70   |
| >    | 6                             | >                    | 2 <sup>3</sup> / <sub>8</sub>            | 8                                                | >                     | > 2.—    |
| >    | 7                             | >                    | 2 <sup>3</sup> / <sub>4</sub>            | 8 <sup>3</sup> / <sub>4</sub>                    | >                     | > 2.70   |
| >    | 8                             | >                    | 3 <sup>9</sup> / <sub>16</sub>           | 9 <sup>1</sup> / <sub>2</sub>                    | >                     | > 3.15   |
| >    | 9                             | >                    | 3 <sup>1</sup> / <sub>2</sub>            | 11                                               | >                     | > 4.50   |



from: Little Muck.



from: Caliph Stork.

Serie comprising 3 Slides each of 4 pictures from each of the following Fairy Tales:

### Little Muck, Caliph Stork, Dwarf Nose and The Phantom Ship.

An excellently finished and richly coloured Serie, with Text.

|      |                               |                      |                                          |                                                  |                       |          |
|------|-------------------------------|----------------------|------------------------------------------|--------------------------------------------------|-----------------------|----------|
| 8843 | 3                             | without cover glass, | 1 <sup>9</sup> / <sub>16</sub> in. wide, | 4 <sup>9</sup> / <sub>8</sub> in. long . . . . . | per Serie = 12 Slides | Mk. —.38 |
| >    | 3 <sup>1</sup> / <sub>2</sub> | >                    | >                                        | 5                                                | >                     | > —.55   |
| >    | 4                             | >                    | 1 <sup>9</sup> / <sub>16</sub>           | 6                                                | >                     | > —.65   |
| >    | 4 <sup>1</sup> / <sub>2</sub> | >                    | >                                        | 6 <sup>3</sup> / <sub>4</sub>                    | >                     | > —.90   |
| >    | 5                             | >                    | 2                                        | 7                                                | >                     | > 1.20   |
| >    | 6                             | >                    | 2 <sup>3</sup> / <sub>8</sub>            | 8                                                | >                     | > 1.50   |
| >    | 7                             | >                    | 2 <sup>3</sup> / <sub>4</sub>            | 8 <sup>3</sup> / <sub>4</sub>                    | >                     | > 2.—    |
| >    | 8                             | >                    | 3 <sup>9</sup> / <sub>16</sub>           | 9 <sup>1</sup> / <sub>2</sub>                    | >                     | > 2.50   |
| >    | 9                             | >                    | 3 <sup>1</sup> / <sub>2</sub>            | 11                                               | >                     | > 3.50   |
| 8844 | 4                             | with cover glass,    | 1 <sup>9</sup> / <sub>16</sub> in. wide, | 6 in. long . . . . .                             | = 12                  | 1.—      |
| >    | 4 <sup>1</sup> / <sub>2</sub> | >                    | >                                        | 6 <sup>3</sup> / <sub>4</sub>                    | >                     | > 1.45   |
| >    | 5                             | >                    | 2                                        | 7                                                | >                     | > 1.70   |
| >    | 6                             | >                    | 2 <sup>3</sup> / <sub>8</sub>            | 8                                                | >                     | > 2.20   |
| >    | 7                             | >                    | 2 <sup>3</sup> / <sub>4</sub>            | 8 <sup>3</sup> / <sub>4</sub>                    | >                     | > 2.75   |
| >    | 8                             | >                    | 3 <sup>9</sup> / <sub>16</sub>           | 9 <sup>1</sup> / <sub>2</sub>                    | >                     | > 3.30   |
| >    | 9                             | >                    | 3 <sup>1</sup> / <sub>2</sub>            | 11                                               | >                     | > 4.50   |

# Long Slides for Magic Lanterns.

## Fairy Tales

finely finished.



from: Robinson Crusoe.



from: Sleeping Beauty.

**Robinson Crusoe** (2 Slides), **Red Ridinghood** (1 Slide), **Sleeping Beauty** (1 Slide),  
**Snow-white** (1 Slide), **Fools Paradise** (1 Slide).

|        |                      |                                         |                                        |                      |          |
|--------|----------------------|-----------------------------------------|----------------------------------------|----------------------|----------|
| 9435/7 | without cover glass, | 2 <sup>3</sup> / <sub>4</sub> in. wide, | 8 <sup>3</sup> / <sub>4</sub> in. long | per Serie = 6 slides | Mk. 1.10 |
| > /8   | >                    | > 3 <sup>9</sup> / <sub>16</sub>        | > 9 <sup>1</sup> / <sub>2</sub>        | > 6                  | > 1.40   |
| > /9   | >                    | > 3 <sup>1</sup> / <sub>2</sub>         | > 11                                   | > 6                  | > 1.90   |
| > /10  | >                    | > 4                                     | > 12                                   | > 6                  | > 2.40   |
| 8335/7 | with cover glass,    | 2 <sup>3</sup> / <sub>4</sub> in. wide, | 8 <sup>3</sup> / <sub>4</sub> in. long | > 6                  | > 1.50   |
| > /8   | >                    | > 3 <sup>9</sup> / <sub>16</sub>        | > 9 <sup>1</sup> / <sub>2</sub>        | > 6                  | > 1.85   |
| > /9   | >                    | > 3 <sup>1</sup> / <sub>2</sub>         | > 11                                   | > 6                  | > 2.45   |
| > /10  | >                    | > 4                                     | > 12                                   | > 6                  | > 2.85   |



from: Hop o'my Thumb.



from: Hansel and Gretel.

**God over all, The 7 Ravens, Hop o'my Thumb, Rabbit Keeper,**  
**Hansel and Gretel and The Bewitched Princess** (each 1 Slide).

|        |                      |                                         |                                        |                      |          |
|--------|----------------------|-----------------------------------------|----------------------------------------|----------------------|----------|
| 6972/7 | without cover glass, | 2 <sup>3</sup> / <sub>4</sub> in. wide, | 8 <sup>3</sup> / <sub>4</sub> in. long | per Serie = 6 slides | Mk. 1.10 |
| > /8   | >                    | > 3 <sup>9</sup> / <sub>16</sub>        | > 9 <sup>1</sup> / <sub>2</sub>        | > 6                  | > 1.40   |
| > /9   | >                    | > 3 <sup>1</sup> / <sub>2</sub>         | > 11                                   | > 6                  | > 1.90   |
| > /10  | >                    | > 4                                     | > 12                                   | > 6                  | > 2.40   |
| 8336/7 | with cover glass,    | 2 <sup>3</sup> / <sub>4</sub> in. wide, | 8 <sup>3</sup> / <sub>4</sub> in. long | > 6                  | > 1.50   |
| > /8   | >                    | > 3 <sup>9</sup> / <sub>16</sub>        | > 9 <sup>1</sup> / <sub>2</sub>        | > 6                  | > 1.85   |
| > /9   | >                    | > 3 <sup>1</sup> / <sub>2</sub>         | > 11                                   | > 6                  | > 2.45   |
| > /10  | >                    | > 4                                     | > 12                                   | > 6                  | > 2.85   |

## Fairy Tales with Historical Pictures

finely finished.



**The Song of the Bell** in 24 single Scenes, **The Battle with the Dragon** (12 Scenes)  
and **Aladdin and the wonderful lamp** (12 Scenes.)

|         |                      |                                 |             |                       |          |
|---------|----------------------|---------------------------------|-------------|-----------------------|----------|
| 7186/10 | without cover glass, | 4 in. wide,                     | 12 in. long | per Serie = 12 slides | Mk. 5. — |
| > /11   | >                    | > 4 <sup>3</sup> / <sub>8</sub> | > 12        | > 12                  | > 6. —   |
| 7187/10 | with cover glass,    | 4 in. wide,                     | 12 in. long | > 12                  | > 6. —   |
| > /11   | >                    | > 4 <sup>3</sup> / <sub>8</sub> | > 12        | > 12                  | > 7.20   |



# Long Slides for Magic Lanterns.



## Pictures of Soldiers

representing the troops of different nations

(England, France, Germany, Italy, Austria, Spain, Russia, Japan, Turkey, Greece and North America),  
in 48 Pictures = 12 glass slides, with Text.

|      |                                |                      |                                |           |                               |          |                       |          |
|------|--------------------------------|----------------------|--------------------------------|-----------|-------------------------------|----------|-----------------------|----------|
| 7158 | 3 <sup>1</sup> / <sub>2</sub>  | without cover glass, | 1 <sup>3</sup> / <sub>8</sub>  | in. wide, | 5                             | in. long | per Serie = 12 slides | Mk. —.58 |
| »    | /4                             | »                    | 1 <sup>9</sup> / <sub>16</sub> | »         | 6                             | »        | = 12 »                | » —.65   |
| »    | /4 <sup>1</sup> / <sub>2</sub> | »                    | 1 <sup>3</sup> / <sub>4</sub>  | »         | 6 <sup>3</sup> / <sub>4</sub> | »        | = 12 »                | » —.90   |
| »    | /5                             | »                    | 2                              | »         | 7                             | »        | = 12 »                | » 1.20   |
| »    | /6                             | »                    | 2 <sup>3</sup> / <sub>8</sub>  | »         | 8                             | »        | = 12 »                | » 1.50   |
| »    | /7                             | »                    | 2 <sup>3</sup> / <sub>4</sub>  | »         | 8 <sup>3</sup> / <sub>4</sub> | »        | = 12 »                | » 2.—    |
| »    | /8                             | »                    | 3 <sup>1</sup> / <sub>8</sub>  | »         | 9 <sup>1</sup> / <sub>2</sub> | »        | = 12 »                | » 2.50   |
| 7159 | /4                             | with cover glass,    | 1 <sup>9</sup> / <sub>16</sub> | in. wide, | 6                             | in. long | = 12 »                | » 1.—    |
| »    | /4 <sup>1</sup> / <sub>2</sub> | »                    | 1 <sup>3</sup> / <sub>4</sub>  | »         | 6 <sup>3</sup> / <sub>4</sub> | »        | = 12 »                | » 1.40   |
| »    | /5                             | »                    | 2                              | »         | 7                             | »        | = 12 »                | » 1.70   |
| »    | /6                             | »                    | 2 <sup>3</sup> / <sub>8</sub>  | »         | 8                             | »        | = 12 »                | » 2.10   |
| »    | /7                             | »                    | 2 <sup>3</sup> / <sub>4</sub>  | »         | 8 <sup>3</sup> / <sub>4</sub> | »        | = 12 »                | » 2.70   |
| »    | /8                             | »                    | 3 <sup>1</sup> / <sub>8</sub>  | »         | 9 <sup>1</sup> / <sub>2</sub> | »        | = 12 »                | » 3.30   |



From: Views from the Nile.



From: Tropical Landscapes.

## Natural Phenomenae, Ice Region, Views from the Nile, and Tropical Landscapes

(3 slides = 12 pictures for each subject)

an excellently finished and richly coloured Serie of 48 pictures = 12 slides, with Text.

|      |                                |                      |                                |           |                               |          |                       |          |
|------|--------------------------------|----------------------|--------------------------------|-----------|-------------------------------|----------|-----------------------|----------|
| 8845 | 3                              | without cover glass, | 1 <sup>3</sup> / <sub>16</sub> | in. wide, | 4 <sup>3</sup> / <sub>8</sub> | in. long | per Serie = 12 slides | Mk. —.38 |
| »    | /3 <sup>1</sup> / <sub>2</sub> | »                    | 1 <sup>3</sup> / <sub>8</sub>  | »         | 5                             | »        | = 12 »                | » —.55   |
| »    | /4                             | »                    | 1 <sup>9</sup> / <sub>16</sub> | »         | 6                             | »        | = 12 »                | » —.65   |
| »    | /4 <sup>1</sup> / <sub>2</sub> | »                    | 1 <sup>3</sup> / <sub>4</sub>  | »         | 6 <sup>3</sup> / <sub>4</sub> | »        | = 12 »                | » —.90   |
| »    | /5                             | »                    | 2                              | »         | 7                             | »        | = 12 »                | » 1.20   |
| »    | /6                             | »                    | 2 <sup>3</sup> / <sub>8</sub>  | »         | 8                             | »        | = 12 »                | » 1.50   |
| »    | /7                             | »                    | 2 <sup>3</sup> / <sub>4</sub>  | »         | 8 <sup>3</sup> / <sub>4</sub> | »        | = 12 »                | » 2.—    |
| »    | /8                             | »                    | 3 <sup>3</sup> / <sub>16</sub> | »         | 9 <sup>1</sup> / <sub>2</sub> | »        | = 12 »                | » 2.50   |
| »    | /9                             | »                    | 3 <sup>1</sup> / <sub>2</sub>  | »         | 11                            | »        | = 12 »                | » 3.50   |
| 8846 | /4                             | with cover glass,    | 1 <sup>9</sup> / <sub>16</sub> | in. wide, | 6                             | in. long | = 12 »                | » 1.—    |
| »    | /4 <sup>1</sup> / <sub>2</sub> | »                    | 1 <sup>3</sup> / <sub>4</sub>  | »         | 6 <sup>3</sup> / <sub>4</sub> | »        | = 12 »                | » 1.45   |
| »    | /5                             | »                    | 2                              | »         | 7                             | »        | = 12 »                | » 1.70   |
| »    | /6                             | »                    | 2 <sup>3</sup> / <sub>8</sub>  | »         | 8                             | »        | = 12 »                | » 2.20   |
| »    | /7                             | »                    | 2 <sup>3</sup> / <sub>4</sub>  | »         | 8 <sup>3</sup> / <sub>4</sub> | »        | = 12 »                | » 2.75   |
| »    | /8                             | »                    | 3 <sup>3</sup> / <sub>16</sub> | »         | 9 <sup>1</sup> / <sub>2</sub> | »        | = 12 »                | » 3.30   |
| »    | /9                             | »                    | 3 <sup>1</sup> / <sub>2</sub>  | »         | 11                            | »        | = 12 »                | » 4.50   |

# Long Slides for Magic Lanterns.



from: Views from Munich.



from: Celebrated Churches.

## Swiss Views, Royal Castles, Celebrated Churches, Views from Munich and Vienna (3 Slides each with 4 pictures)

with Text

|                    |                      |                           |                         |                       |          |
|--------------------|----------------------|---------------------------|-------------------------|-----------------------|----------|
| 8847/3             | without cover glass, | $1\frac{3}{16}$ in. wide, | $4\frac{3}{8}$ in. long | per serie = 12 slides | Mk. —.38 |
| » /3 $\frac{1}{2}$ | » » »                | $1\frac{9}{8}$ » »        | 5 » »                   | = 12 » »              | —.55     |
| » /4               | » » »                | $1\frac{9}{16}$ » »       | 6 » »                   | = 12 » »              | —.65     |
| » /4 $\frac{1}{2}$ | » » »                | $1\frac{9}{4}$ » »        | $6\frac{3}{4}$ » »      | = 12 » »              | —.90     |
| » /5               | » » »                | 2 » »                     | 7 » »                   | = 12 » »              | 1.20     |
| » /6               | » » »                | $2\frac{3}{8}$ » »        | 8 » »                   | = 12 » »              | 1.50     |
| » /7               | » » »                | $2\frac{3}{4}$ » »        | $8\frac{3}{4}$ » »      | = 12 » »              | 2.—      |
| » /8               | » » »                | $3\frac{3}{16}$ » »       | $9\frac{1}{2}$ » »      | = 12 » »              | 2.50     |
| » /9               | » » »                | $3\frac{1}{2}$ » »        | 11 » »                  | = 12 » »              | 3.50     |
| 8848/4             | with cover glass,    | $1\frac{9}{16}$ in. wide, | 6 in. long              | = 12 » »              | 1.—      |
| » /4 $\frac{1}{2}$ | » » »                | $1\frac{9}{4}$ » »        | $6\frac{3}{4}$ » »      | = 12 » »              | 1.45     |
| » /5               | » » »                | 2 » »                     | 7 » »                   | = 12 » »              | 1.70     |
| » /6               | » » »                | $2\frac{3}{8}$ » »        | 8 » »                   | = 12 » »              | 2.20     |
| » /7               | » » »                | $2\frac{3}{4}$ » »        | $8\frac{3}{4}$ » »      | = 12 » »              | 2.75     |
| » /8               | » » »                | $3\frac{3}{16}$ » »       | $9\frac{1}{2}$ » »      | = 12 » »              | 3.30     |
| » /9               | » » »                | $3\frac{1}{2}$ » »        | 11 » »                  | = 12 » »              | 4.50     |

## New travels round the world.

Interesting views from different Lands, including Paris, Rhineland, Bull Fights, North Pole, Venice, Naples, New York, Niagara Falls, China, Japan, India, Africa etc.



|        |                      |                          |                    |                       |          |
|--------|----------------------|--------------------------|--------------------|-----------------------|----------|
| 6610/6 | without cover glass, | $2\frac{3}{4}$ in. wide, | 8 in. long         | per serie = 12 slides | Mk. 1.60 |
| » /7   | » » »                | $2\frac{3}{4}$ » »       | $8\frac{3}{4}$ » » | = 12 » »              | 2.—      |
| » /8   | » » »                | $3\frac{3}{16}$ » »      | $9\frac{1}{2}$ » » | = 12 » »              | 2.50     |
| » /9   | » » »                | $3\frac{1}{2}$ » »       | 11 » »             | = 12 » »              | 3.65     |
| » /10  | » » »                | 4 » »                    | 12 » »             | = 12 » »              | 4.50     |
| 6620/6 | with cover glass,    | $2\frac{3}{8}$ in. wide, | 8 in. long         | = 12 » »              | 2.20     |
| » /7   | » » »                | $2\frac{3}{4}$ » »       | $8\frac{3}{4}$ » » | = 12 » »              | 2.75     |
| » /8   | » » »                | $3\frac{3}{16}$ » »      | $9\frac{1}{2}$ » » | = 12 » »              | 3.30     |
| » /9   | » » »                | $3\frac{1}{2}$ » »       | 11 » »             | = 12 » »              | 4.65     |
| » /10  | » » »                | 4 » »                    | 12 » »             | = 12 » »              | 5.75     |

# Long Slides for Magic Lanterns.



## A trip round the world.

Representing a trip, leaving Bremerhaven for Gibraltar, Suez-Canal, India, China, Japan, Australia, Cape Colony and returning by England. — Countries and inhabitants illustrated by 48 artistic pictures on 12 long Glass slides **with text**

|      |     |                      |   |           |                                |          |           |                               |          |   |      |   |   |      |
|------|-----|----------------------|---|-----------|--------------------------------|----------|-----------|-------------------------------|----------|---|------|---|---|------|
| 9436 | /5  | without cover glass, | 2 | in. wide, | 7                              | in. long | . . . . . | per Serie = 12 slides         | Mk. 1.25 |   |      |   |   |      |
| »    | /6  | »                    | » | »         | 2 <sup>3</sup> / <sub>8</sub>  | »        | »         | 8                             | »        | » | = 12 | » | » | 1.60 |
| »    | /7  | »                    | » | »         | 2 <sup>3</sup> / <sub>4</sub>  | »        | »         | 8 <sup>3</sup> / <sub>4</sub> | »        | » | = 12 | » | » | 2.—  |
| »    | /8  | »                    | » | »         | 3 <sup>3</sup> / <sub>16</sub> | »        | »         | 9 <sup>1</sup> / <sub>2</sub> | »        | » | = 12 | » | » | 2.50 |
| »    | /9  | »                    | » | »         | 3 <sup>1</sup> / <sub>2</sub>  | »        | »         | 11                            | »        | » | = 12 | » | » | 3.60 |
| »    | /10 | »                    | » | »         | 4                              | »        | »         | 12                            | »        | » | = 12 | » | » | 4.50 |
| 7209 | /5  | with cover glass,    | 2 | in. wide, | 7                              | in. long | . . . . . | = 12                          | »        | » | = 12 | » | » | 1.70 |
| »    | /6  | »                    | » | »         | 2 <sup>3</sup> / <sub>8</sub>  | »        | »         | 8                             | »        | » | = 12 | » | » | 2.20 |
| »    | /7  | »                    | » | »         | 2 <sup>3</sup> / <sub>4</sub>  | »        | »         | 8 <sup>3</sup> / <sub>4</sub> | »        | » | = 12 | » | » | 2.75 |
| »    | /8  | »                    | » | »         | 3 <sup>3</sup> / <sub>16</sub> | »        | »         | 9 <sup>1</sup> / <sub>2</sub> | »        | » | = 12 | » | » | 3.30 |
| »    | /9  | »                    | » | »         | 3 <sup>1</sup> / <sub>2</sub>  | »        | »         | 11                            | »        | » | = 12 | » | » | 4.65 |
| »    | /10 | »                    | » | »         | 4                              | »        | »         | 12                            | »        | » | = 12 | » | » | 5.75 |



## Life in the United States of America

with text

fine assortment comprising 12 long glass slides each with 4 pictures

|      |     |                      |   |           |                                |          |           |                               |          |   |      |   |   |      |
|------|-----|----------------------|---|-----------|--------------------------------|----------|-----------|-------------------------------|----------|---|------|---|---|------|
| 7190 | /5  | without cover glass, | 2 | in. wide, | 7                              | in. long | . . . . . | per Serie = 12 slides         | Mk. 1.25 |   |      |   |   |      |
| »    | /6  | »                    | » | »         | 2 <sup>3</sup> / <sub>8</sub>  | »        | »         | 8                             | »        | » | = 12 | » | » | 1.60 |
| »    | /7  | »                    | » | »         | 2 <sup>3</sup> / <sub>4</sub>  | »        | »         | 8 <sup>3</sup> / <sub>4</sub> | »        | » | = 12 | » | » | 2.—  |
| »    | /8  | »                    | » | »         | 3 <sup>3</sup> / <sub>16</sub> | »        | »         | 9 <sup>1</sup> / <sub>2</sub> | »        | » | = 12 | » | » | 2.50 |
| »    | /9  | »                    | » | »         | 3 <sup>1</sup> / <sub>2</sub>  | »        | »         | 11                            | »        | » | = 12 | » | » | 3.60 |
| »    | /10 | »                    | » | »         | 4                              | »        | »         | 12                            | »        | » | = 12 | » | » | 4.50 |
| 7191 | /5  | with cover glass,    | 2 | in. wide, | 7                              | in. long | . . . . . | = 12                          | »        | » | = 12 | » | » | 1.70 |
| »    | /6  | »                    | » | »         | 2 <sup>3</sup> / <sub>8</sub>  | »        | »         | 8                             | »        | » | = 12 | » | » | 2.20 |
| »    | /7  | »                    | » | »         | 2 <sup>3</sup> / <sub>4</sub>  | »        | »         | 8 <sup>3</sup> / <sub>4</sub> | »        | » | = 12 | » | » | 2.75 |
| »    | /8  | »                    | » | »         | 3 <sup>3</sup> / <sub>16</sub> | »        | »         | 9 <sup>1</sup> / <sub>2</sub> | »        | » | = 12 | » | » | 3.30 |
| »    | /9  | »                    | » | »         | 3 <sup>1</sup> / <sub>2</sub>  | »        | »         | 11                            | »        | » | = 12 | » | » | 4.65 |
| »    | /10 | »                    | » | »         | 4                              | »        | »         | 12                            | »        | » | = 12 | » | » | 5.75 |

# Long Slides for Magic Lanterns.



from: The old Testament.



from: The new Testament.

## The old Testament, The new Testament, Passion, and Views from Palastine

(3 Slides each with 4 pictures) with Text

An excellently finished and finely coloured serie of 48 pictures on 12 slides.

|                  |                      |                           |                         |                       |          |
|------------------|----------------------|---------------------------|-------------------------|-----------------------|----------|
| 8841/3           | without cover glass, | $1\frac{3}{16}$ in. wide, | $4\frac{3}{8}$ in. long | per Serie = 12 slides | Mk. —.38 |
| » $3\frac{1}{2}$ | » » »                | $1\frac{3}{8}$ » »        | 5 » »                   | » » = 12 » »          | » —.55   |
| » 4              | » » »                | $1\frac{1}{6}$ » »        | 6 » »                   | » » = 12 » »          | » —.65   |
| » $4\frac{1}{2}$ | » » »                | $1\frac{3}{4}$ » »        | $6\frac{3}{4}$ » »      | » » = 12 » »          | » —.90   |
| » 5              | » » »                | 2 » »                     | 7 » »                   | » » = 12 » »          | » 1.20   |
| » 6              | » » »                | $2\frac{3}{8}$ » »        | 8 » »                   | » » = 12 » »          | » 1.50   |
| » 7              | » » »                | $2\frac{3}{4}$ » »        | $8\frac{3}{4}$ » »      | » » = 12 » »          | » 2.—    |
| » 8              | » » »                | $3\frac{3}{16}$ » »       | $9\frac{1}{2}$ » »      | » » = 12 » »          | » 2.50   |
| » 9              | » » »                | $3\frac{1}{2}$ » »        | 11 » »                  | » » = 12 » »          | » 3.50   |
| 8842/4           | with cover glass,    | $1\frac{9}{16}$ in. wide, | 6 in. long              | » » = 12 » »          | » 1.—    |
| » $4\frac{1}{2}$ | » » »                | $1\frac{3}{4}$ » »        | $6\frac{3}{4}$ » »      | » » = 12 » »          | » 1.45   |
| » 5              | » » »                | 2 » »                     | 7 » »                   | » » = 12 » »          | » 1.70   |
| » 6              | » » »                | $2\frac{3}{8}$ » »        | 8 » »                   | » » = 12 » »          | » 2.20   |
| » 7              | » » »                | $2\frac{3}{4}$ » »        | $8\frac{3}{4}$ » »      | » » = 12 » »          | » 2.75   |
| » 8              | » » »                | $3\frac{3}{16}$ » »       | $9\frac{1}{2}$ » »      | » » = 12 » »          | » 3.30   |
| » 9              | » » »                | $3\frac{1}{2}$ » »        | 11 » »                  | » » = 12 » »          | » 4.50   |



## New Natural History Pictures

48 artistically finished pictures with Text.

|                      |                      |                          |                         |                       |          |
|----------------------|----------------------|--------------------------|-------------------------|-----------------------|----------|
| 6621/4 $\frac{1}{2}$ | without cover glass, | $1\frac{3}{4}$ in. wide, | $6\frac{3}{4}$ in. long | per serie = 12 slides | Mk. —.95 |
| » 5                  | » » »                | 2 » »                    | 7 » »                   | » » = 12 » »          | » 1.20   |
| » 6                  | » » »                | $2\frac{3}{8}$ » »       | 8 » »                   | » » = 12 » »          | » 1.50   |
| » 7                  | » » »                | $2\frac{3}{4}$ » »       | $8\frac{3}{4}$ » »      | » » = 12 » »          | » 2.—    |
| » 8                  | » » »                | $3\frac{3}{16}$ » »      | $9\frac{1}{2}$ » »      | » » = 12 » »          | » 2.60   |
| » 9                  | » » »                | $3\frac{1}{2}$ » »       | 11 » »                  | » » = 12 » »          | » 3.65   |
| » 10                 | » » »                | 4 » »                    | 12 » »                  | » » = 12 » »          | » 4.60   |
| 6622/4 $\frac{1}{2}$ | with cover glass,    | $1\frac{3}{4}$ in. wide, | $6\frac{3}{4}$ in. long | » » = 12 » »          | » 1.45   |
| » 5                  | » » »                | 2 » »                    | 7 » »                   | » » = 12 » »          | » 1.70   |
| » 6                  | » » »                | $2\frac{3}{8}$ » »       | 8 » »                   | » » = 12 » »          | » 2.20   |
| » 7                  | » » »                | $2\frac{3}{4}$ » »       | $8\frac{3}{4}$ » »      | » » = 12 » »          | » 2.75   |
| » 8                  | » » »                | $3\frac{3}{16}$ » »      | $9\frac{1}{2}$ » »      | » » = 12 » »          | » 3.30   |
| » 9                  | » » »                | $3\frac{1}{2}$ » »       | 11 » »                  | » » = 12 » »          | » 4.65   |
| » 10                 | » » »                | 4 » »                    | 12 » »                  | » » = 12 » »          | » 5.75   |

# Long Slides for Magic Lanterns.



## New Natural History Pictures, each 6 slides:

Sea Animals, Fish etc. and Butterflies with their Caterpillars.

A highly interesting and instructive Serie of 48 pictures = 12 slides with excellent effect.

|        |                                                            |                       |          |
|--------|------------------------------------------------------------|-----------------------|----------|
| 6632/9 | without cover glass, 3 1/8 in. wide, 11 in. long . . . . . | per Serie = 12 slides | Mk. 3.65 |
| > /10  | > > > 4 > > 12 > > . . . . .                               | > > = 12 > >          | > > 4.60 |
| 6637/9 | with cover glass, 3 1/8 in. wide, 11 in. long . . . . .    | > > = 12 > >          | > > 4.65 |
| > /10  | > > > 4 > > 12 > > . . . . .                               | > > = 12 > >          | > > 5.75 |



7188 & 7189

## History of Frederick the Great and the 7 years wars,

Very fine serie, consisting of 12 slides each with 4 pictures.

|         |                                                        |                       |          |
|---------|--------------------------------------------------------|-----------------------|----------|
| 7188/10 | without cover glass, 4 in. wide, 12 in. long . . . . . | per Serie = 12 slides | Mk. 5.—  |
| > /11   | > > > 4 3/8 > > 12 > > . . . . .                       | > > = 12 > >          | > > 6.25 |
| 7189/10 | with cover glass, 4 in. wide, 12 in. long . . . . .    | > > = 12 > >          | > > 6.25 |
| > /11   | > > > 4 3/8 > > 12 > > . . . . .                       | > > = 12 > >          | > > 7.35 |



6011 & 6014

## From the life of Dr. Martin Luthers (3 slides) and German and Oriental Fairy Tales (9 slides)

New serie, consisting of 12 long glass slides, each with 4 pictures.

|         |                                                        |                       |          |
|---------|--------------------------------------------------------|-----------------------|----------|
| 6011/10 | without cover glass, 4 in. wide, 12 in. long . . . . . | per Serie = 12 slides | Mk. 5.10 |
| > /11   | > > > 4 3/8 > > 12 > > . . . . .                       | > > = 12 > >          | > > 6.30 |
| 6014/10 | with cover glass, 4 in. wide, 12 in. long . . . . .    | > > = 12 > >          | > > 6.30 |
| > /11   | > > > 4 3/8 > > 12 > > . . . . .                       | > > = 12 > >          | > > 7.45 |



6793 & 6794

## From the life of Emperor William I.

New serie, consisting of 12 long glass slides, each with 4 pictures.

|         |                                                        |                       |          |
|---------|--------------------------------------------------------|-----------------------|----------|
| 6793/10 | without cover glass, 4 in. wide, 12 in. long . . . . . | per Serie = 12 slides | Mk. 5.05 |
| > /11   | > > > 4 3/8 > > 12 > > . . . . .                       | > > = 12 > >          | > > 6.25 |
| 6794/10 | with cover glass, 4 in. wide, 12 in. long . . . . .    | > > = 12 > >          | > > 6.25 |
| > /11   | > > > 4 3/8 > > 12 > > . . . . .                       | > > = 12 > >          | > > 7.25 |

# Short slides with cover glass for Dissolving View Apparati and Sciopticons.



7223



7223

## Sets of finely finished short glass slides with cover glass,

consisting of 12 Tableaux = 24 pictures, each Tableau consisting of 2 pictures, which through the Dissolvers on the apparati can be transformed into the so called Dissolving Views.

|        |    |           |       |                    |                                |
|--------|----|-----------|-------|--------------------|--------------------------------|
| 7223/5 | 2  | in. wide, | 3 1/4 | in. long . . . . . | per Serie = 12 pairs. Mk. 1.90 |
| »      | /6 | 2 3/8     | »     | 3 1/2              | » » = 12 » » 2.30              |
| »      | /7 | 2 3/4     | »     | 4                  | » » = 12 » » 2.95              |
| »      | /8 | 3 3/16    | »     | 4 3/8              | » » = 12 » » 3.15              |

### Serie I.

### Serie II.

1. Commencement of the Performance.
2. Mausoleum in Winter and in Summer.
3. Hindu with Elephant, before and after the attack of a Tiger.
4. Ship with Calm and with stormy Sea.
5. Cyclist, before and after the fall.
6. Peasant, driving Pigs (2 pictures).
7. Waiter, before and after the mishap.
8. Children dancing on the ice, the ice breaks.
9. Clown with the snake (2 pictures).
10. Clown with the devil (2 pictures).
11. Christmas before and in the House.
12. The End, Good night.

13. Good Beer, Bad Beer.
14. Rider, before and after the fall.
15. Faust and Mephisto, then Hell.
16. Dog following Cat, Cat saved.
17. From the frying pan into the fire (Nigger chased by a lion, is caught by a crocodile).
18. Vesuvius near Naples, by day and by night.
19. Fruit stall before and after the accident.
20. Excursionist before and after the meeting.
21. Railway accident, before and after the catastrophe.
22. Sledging with fatal results.
23. Before and after the arrival of the school master.
24. Fire alarm, Saved.



9408

## New assortment of finely finished short glass slides, with cover glass, with Text in Series of 12 pictures.

|                                     |                              |                                   |
|-------------------------------------|------------------------------|-----------------------------------|
| Serie 1. (Fairy Tales). Little Muek | Serie 5. Natural Phenomenac. | Serie 9. Swiss Views.             |
| » 2. » » Caliph Stork.              | » 6. Ice Region.             | » 10. Royal Castles.              |
| » 3. » » Dwarf Nose.                | » 7. Views of the Nile.      | » 11. Celebrated Churches.        |
| » 4. » » Phantom Ship.              | » 8. Tropical Landscapes.    | » 12. Views of Munich and Vienna. |

|        |        |           |       |                    |                                 |
|--------|--------|-----------|-------|--------------------|---------------------------------|
| 9408/5 | 2      | in. wide, | 3 1/4 | in. long . . . . . | per Serie = 12 pictures Mk. 1.— |
| »      | /6     | 2 3/8     | »     | 3 1/2              | » » = 12 » » 1.25               |
| »      | /7     | 2 3/4     | »     | 4                  | » » = 12 » » 1.35               |
| »      | /8     | 3 3/16    | »     | 4 3/8              | » » = 12 » » 1.60               |
| »      | /8 1/2 | 3 1/4     | »     | 4                  | » » = 12 » » 1.75               |
| »      | /9     | 3 1/2     | »     | 4 3/4              | » » = 12 » » 2.20               |
| »      | /10    | 4         | »     | 5 1/8              | » » = 12 » » 2.65               |

# Short covered Slides for Dissolving View Apparati and Sciopticons.

6630/8<sup>1</sup>/<sub>2</sub>

**6630/8<sup>1</sup>/<sub>2</sub> Glass Slides,**  
finely coloured, well finished  
size 3<sup>1</sup>/<sub>4</sub> × 3<sup>1</sup>/<sub>4</sub> in.,

This assortment consists of 36 sets of pictures  
each set contains 12 separate pictures with Text

Price per set of 12 pictures **Mk. 1.65**

## Subjects.

|                                                  |                    |                                      |
|--------------------------------------------------|--------------------|--------------------------------------|
| No. 1. 12 Views from the Old Testament.          | No. 21. 12 Views = | 6 Views Cinderella.                  |
| » 2. 12 » from the New Testament.                | » 22. 12 » =       | 6 » Sleeping Beauty.                 |
| » 3. 12 » from Passion.                          | » 23. 12 » =       | 6 » Wolf and the Goats.              |
| » 4. 12 » Paul and Virginia.                     | » 24. 12 » =       | 6 » Hare and the Hedgehog.           |
| » 5. 12 » Life in Africa.                        | » 25. 12 » =       | 6 » Snow-white.                      |
| » 6. 12 » from the Polar Regions.                | » 26. 12 »         | 6 » Hop o' my thumb.                 |
| » 7. 12 » Hunting and Animal pictures.           | » 27. 12 »         | of Palastine.                        |
| » 8. 12 » Wild Huntsman.                         | » 28. 12 »         | Max and Moritz, Boxer and Children's |
| » 9. 12 » Land, Sea and Mountain Views.          | » 29. 12 »         | Scenes without text.                 |
| » 10. 12 » Little Muck.                          | » 30. 12 »         | Natural Phenomena.                   |
| » 11. 12 » Caliph Stork.                         | » 31. 12 »         | of the Nile and Egypt.               |
| » 12. 12 » Dwarf Nose.                           | » 32. 12 »         | New Landscapes without text.         |
| » 13. 12 » Phantom Ship.                         | » 33. 12 »         | Different interesting pictures.      |
| » 14. 12 » Discovery of America.                 | » 34. 12 »         | of Switzerland.                      |
| » 15. 12 » Reynard the Fox Part I without text.  | » 35. 12 »         | Celebrated Buildings and Castles in  |
| » 16. 12 » Robinson Crusoe.                      | » 36. 12 »         | Munich.                              |
| » 17. 12 » Reynard the Fox Part II without text. |                    | Celebrated Buildings in Vienna and   |
| » 18. 12 » Don Quixotte.                         |                    | Pragne.                              |
| » 19. 12 » =                                     |                    | Celebrated Churches.                 |
| » 20. 12 » =                                     |                    | The last of the Mohicans.            |
|                                                  |                    | The brave little Tailor.             |
|                                                  |                    | The Table, the Ass and the Stick.    |



9409

## New assortment of finely finished short glass slides

representing **The old Testament, The new Testament, Passion, and Views from Palastine**  
in 48 pictures

|                                  |                                |           |                               |           |           |             |                |
|----------------------------------|--------------------------------|-----------|-------------------------------|-----------|-----------|-------------|----------------|
| 9409/5                           | 2                              | in. wide, | 3                             | in. long. | per serie | = 48 slides | <b>Mk. 3.—</b> |
| » /6                             | 2 <sup>3</sup> / <sub>5</sub>  | »         | 3 <sup>1</sup> / <sub>2</sub> | »         | »         | = 48 »      | <b>3.90</b>    |
| » /7                             | 2 <sup>3</sup> / <sub>4</sub>  | »         | 4                             | »         | »         | = 48 »      | <b>4.70</b>    |
| » /8                             | 3 <sup>3</sup> / <sub>16</sub> | »         | 4 <sup>1</sup> / <sub>4</sub> | »         | »         | = 48 »      | <b>6.25</b>    |
| » /8 <sup>1</sup> / <sub>2</sub> | 3 <sup>1</sup> / <sub>4</sub>  | »         | 4                             | »         | »         | = 48 »      | <b>6.50</b>    |
| » /9                             | 3 <sup>1</sup> / <sub>2</sub>  | »         | 4 <sup>3</sup> / <sub>4</sub> | »         | »         | = 48 »      | <b>7.50</b>    |
| » /10                            | 4                              | »         | 5                             | »         | »         | = 48 »      | <b>8.25</b>    |

Slide Carriers, fitting to slides of 3<sup>1</sup>/<sub>4</sub> × 3<sup>1</sup>/<sub>4</sub> in. and 3<sup>1</sup>/<sub>4</sub> × 4 in. size see page 200.

# Short covered Slides for Dissolving View Apparati and Sciopticons.



7227

## 7227/8 1/4 Life in the United States of America.

Serie of 48 pictures with Text, representing the following Scenes:

- |                                      |                                      |                                         |
|--------------------------------------|--------------------------------------|-----------------------------------------|
| 1. An Indian medicine man.           | 17. On the war path.                 | 33. St. Louis.                          |
| 2. An opium den in San Francisco.    | 18. Sculpting the enemy.             | 34. Light house in Atlantic City.       |
| 3. An Hotel in the Goldfields.       | 19. The prairie wolf.                | 35. On the shores of Hudson river.      |
| 4. A Nigger Congregation.            | 20. The pacific railway.             | 36. Lincoln Monument.                   |
| 5. Ma-koon-tu-in-wen Canon Colorado. | 21. A mile stone in the prairie.     | 37. Trinidad. The Mexican quarter       |
| 6. Yosemite valley.                  | 22. An Indian Cemetery.              | 38. Gold washing.                       |
| 7. Shuykill River, Falls Bridge.     | 23. Hot-springs in California.       | 39. Indian village.                     |
| 8. Mountain formation in South Utah. | 24. The Geysier.                     | 40. Harvest on a cotton farm.           |
| 9. Mammoth cave in Kentucky.         | 25. Montgomery Street San Francisco. | 41. City Park and Town hall.            |
| 10. Niagara Falls.                   | 26. Street in Florida.               | 42. Brooklyn Bridge.                    |
| 11. Niagara Falls, entire view.      | 27. Canal Street. New York.          | 43. Sacramento Street in San Francisco. |
| 12. St. Lawrence River.              | 28. Broadway. New York.              | 44. New York. Union Place.              |
| 13. Black man and his wife.          | 29. The Oyster Port. New York.       | 45. The Mosquito Plagues.               |
| 14. Dress of the northern tribes.    | 30. A nigger village in Louisiana.   | 46. The emigrants exchange.             |
| 15. Pimo Indians. Arizona.           | 31. Chinatown. The black quarter.    | 47. Interior of a Hudson steamer.       |
| 16. A Comanche warrior.              | 32. White-house, Washington.         | 48. Overground railway. New York.       |

3 1/4 in. wide, 4 in. long . . . . . per serie = 48 slides Mk. 7.



7226

## Assortment of notable Monuments and Buildings Landscapes and other interesting views.

Serie of 48 pictures representing.

- |                                     |                                        |                                     |
|-------------------------------------|----------------------------------------|-------------------------------------|
| 1. The Colossus at Rhodes.          | 10. Bulwark Rock in Saxon Switzerland. | 18. The dome at Milan.              |
| 2. The Light-house near Alexandria. | 11. Isle of Ischia near Naples.        | 19. Sonneck on the Rhine.           |
| 3. The 3 pyramids of Gizeh (Egypt). | 12. Angillora Tower on the Luugaretta  | 20. Hellbrunn near Salzburg.        |
| 4. Mosque in Cairo.                 | 13. Villa Dora Gardens } Pamphel.      | 21. Porta Settimiana in Trastevere  |
| 5. Temple of Kom-Ombon.             | 14. " " " } Pamphel.                   | (Italy).                            |
| 6. Isis Temple on Philae.           | 15. Railway Viaduct over the Laguna    | 22. Via Mala (Switzerland).         |
| 7. Abou Simbel. Rock Temple.        | to Venice.                             | 23. Camb on the Rhine.              |
| 8. Diane temple at Ephesus.         | 16. Warthburg.                         | 24. Morgarten Chapel (Switzerland). |
| 9. Heidelberg Castle.               | 17. Berchtesgaden.                     |                                     |

Subjects Nos. 25—48 interesting views, comical scenes, hunting adventures etc.

7226/8 3 1/4 in. wide, 4 in. long . . . . . per serie = 48 slides Mk. 6.30  
 »/9 3 1/4 » » 4 1/4 » » » » » = 48 » » 7.35



7229/10

## 7229/10 Assortment of 48 finely finished slides

representing the Song of the Bell, The Battle with the Dragon, Aladdin and the wonderful Lamp,

4 in. wide, 5 1/4 in. long . . . . . per serie = 48 slides Mk. 8.75

Slide Carriers, fitting to sildes of 3 1/4 x 3 1/4 in. and 3 1/4 x 4 in. size see page 200.



# Moving Pictures in Wood Frames.

It is important when ordering pictures in wood frames, to remember that they differ from the widths of the Lanterns, you are therefore requested, with every order to give the width of such pictures in wood frames, as are enclosed with the Lanterns.



6958 &amp; 8344

## Chromatropes with Cog-wheel gear in 12 different designs.

|              | 4      | 4 1/2 | 5    | 6     | 7     | 8      | 9     | 10    |
|--------------|--------|-------|------|-------|-------|--------|-------|-------|
| 6958/3 1/2   |        |       |      |       |       |        |       |       |
| width 1 9/16 | 1 9/16 | 1 3/4 | 2    | 2 3/8 | 2 3/4 | 3 3/16 | 3 1/2 | 4 in. |
| each Mk.     | -.24   | -.27  | -.30 | -.36  | -.48  | -.57   | -.70  | -.90  |

## Chromatropes with Cog-wheel gear (Hand Painted) in 36 designs.

|              | 4 1/2 | 5    | 6     | 7     | 8      | 9     | 10    |
|--------------|-------|------|-------|-------|--------|-------|-------|
| 8344/4       |       |      |       |       |        |       |       |
| width 1 9/16 | 1 3/4 | 2    | 2 3/8 | 2 3/4 | 3 3/16 | 3 1/2 | 4 in. |
| each Mk.     | -.35  | -.42 | -.48  | -.60  | -.75   | 1.-   | 1.20  |



7296

## New Revolving Pictures, 6 Subjects:

1. Windmill.
2. Water Mill.
3. Soap Bubbles.
4. Aquarium with Fishes.
5. Conjurer.
6. Clown with 8 Heads.

|              | 4 1/2 | 5    | 6     | 7     | 8      | 9         |
|--------------|-------|------|-------|-------|--------|-----------|
| 7296/4       |       |      |       |       |        |           |
| width 1 9/16 | 1 3/4 | 2    | 2 3/8 | 2 3/4 | 3 3/16 | 3 1/2 in. |
| each Mk.     | -.30  | -.35 | -.42  | -.50  | -.55   | -.65      |
|              |       |      |       |       |        | -.70      |



9030

## New Lever Pictures, 6 Subjects:

1. Mother and Child.
2. Butterfly Hunting.
3. The Painter.
4. Cat and Clock.
5. Punch and the Devil.
6. Ship in Stormy Sea.

|              | 4 1/2 | 5    | 6     | 7     | 8      | 9     | 10    |
|--------------|-------|------|-------|-------|--------|-------|-------|
| 9030/4       |       |      |       |       |        |       |       |
| width 1 9/16 | 1 3/4 | 2    | 2 3/8 | 2 3/4 | 3 3/16 | 3 1/2 | 4 in. |
| each Mk.     | -.33  | -.35 | -.45  | -.50  | -.65   | -.70  | -.80  |
|              |       |      |       |       |        |       | -.90  |



7297

## New Fixed Landscapes, 12 Subjects:

1. Axen Street on the Lake of the four forest towns.
2. Grande Canal in Venice.
3. Ambros Castle in the Tyrol.
4. Miranare Castle.
5. The Memnon Columns near Thebes.
6. Akka on the Mediterranean Sea.
7. Corfu Island.
8. Niagara Falls.
9. Yellowstone Park.
10. Northern Landscape with the Midnight Sun.
11. Berg Castle on Lake Starnberg.
12. Carlstein Castle (Bohemia).

|          | 6     | 7     | 8      | 9     | 10    |
|----------|-------|-------|--------|-------|-------|
| 7297/5   |       |       |        |       |       |
| width 2  | 2 3/8 | 2 3/4 | 3 3/16 | 3 1/2 | 4 in. |
| each Mk. | -.25  | -.30  | -.35   | -.40  | -.50  |

# Moving Pictures in Wood and Tin Frames.

It is important when ordering pictures in wood frames, to remember that they differ from the widths of the Lanterns, you are therefore requested, with every order to give the width of such pictures in wood frames, as are enclosed with the Lanterns.



7254

## New comical changing Pictures, in Tin frames, 12 Subjects.

1. Vagabond and Swell.
2. Professor Bathing.
3. Sleeping Postillon.
4. Peasant and Locomotive.

5. Newly painted seat.
6. Tourist and Crocodile.
7. Peasant and Goat.
8. Disappointed Fisherman.

9. Chimney-sweep and Baker.
10. Courageous Lady Cyclist.
11. Acting out of Character.
12. The Cooper's bad luck.

|          | 7254/3 1/2 | 4      | 4 1/2 | 5    | 6     | 7     | 8      | 9     | 10    |
|----------|------------|--------|-------|------|-------|-------|--------|-------|-------|
| width    | 1 3/8      | 1 9/16 | 1 3/4 | 2    | 2 3/8 | 2 3/4 | 3 3/16 | 3 1/2 | 4 in. |
| each Mk. | -.08       | -.10   | -.12  | -.14 | -.18  | -.22  | -.30   | -.35  | -.40  |



7221

## New comical changing Pictures in Wood frames, 12 Subjects.

1. Vagabond and Swell.
2. Professor Bathing.
3. Sleeping Postillon.
4. Peasant and Locomotive.

5. Newly painted seat.
6. Tourist and Crocodile.
7. Peasant and Goat.
8. Disappointed Fisherman.

9. Chimney-sweep and Baker.
10. Courageous Lady Cyclist.
11. Acting out of Character.
12. The Cooper's bad luck.

|          | 7221/4 | 4 1/2 | 5    | 6     | 7     | 8      | 9     | 10    |
|----------|--------|-------|------|-------|-------|--------|-------|-------|
| width    | 1 9/16 | 1 3/4 | 2    | 2 3/8 | 2 3/4 | 3 3/16 | 3 1/2 | 4 in. |
| each Mk. | -.18   | -.22  | -.25 | -.30  | -.38  | -.48   | -.52  | -.60  |



7255

## New comical changing Pictures, in Wood frames, 12 Subjects.

1. The Mountaineer.
2. Conjuror.
3. Pupil and Teacher.
4. Juggler.

5. Horseman.
6. Mysterious Basket.
7. Clown and Dog.
8. Gallant Railway Conductor.

9. The unlucky Doll.
10. Unlucky Cyclist.
11. Highway-man.
12. Good night.

|          | 7255/4 | 4 1/2 | 5    | 6     | 7     | 8      | 9     | 10    |
|----------|--------|-------|------|-------|-------|--------|-------|-------|
| width    | 1 9/16 | 1 3/4 | 2    | 2 3/8 | 2 3/4 | 3 3/16 | 3 1/2 | 4 in. |
| each Mk. | -.25   | -.28  | -.33 | -.38  | -.48  | -.55   | -.65  | -.75  |



7268

## New Landscapes with sliding Figures, in Wood frames, 12 Subjects.

1. The Flood (comical).
2. Herdsman with Cattle.
3. House of Parliament, Berlin.
4. St. Peters Church, Rome, a procession.

5. A Balloon.
6. Lighthouse and Ships.
7. Mosque in Cairo with Caravan.
8. St. Gotthards Railway with train and bridge.

9. Fire and Fire Brigade.
10. Gondolas in Venice.
11. Bridge in St. Petersburg with Sledge Party.
12. Rhine Landscape with sailing Boats.

|          | 7268/4 | 4 1/2 | 5    | 6     | 7     | 8      | 9     | 10    |
|----------|--------|-------|------|-------|-------|--------|-------|-------|
| width    | 1 9/16 | 1 3/4 | 2    | 2 3/8 | 2 3/4 | 3 3/16 | 3 1/2 | 4 in. |
| each Mk. | -.25   | -.30  | -.35 | -.40  | -.50  | -.55   | -.65  | -.75  |

# Fine Photographic Magic Lantern Slides

(Photogrammes).

Finely finished, taken from nature, very effective.



9457

## Views from Holland (6 slides each with 4 views)

|      |   |                   |   |           |                  |          |                      |                 |
|------|---|-------------------|---|-----------|------------------|----------|----------------------|-----------------|
| 9457 | 5 | with cover glass. | 2 | in. wide, | 7 $\frac{1}{4}$  | in. long | per serie = 6 slides | <b>Mk. 3.35</b> |
| >    | 6 | >                 | > | >         | 2 $\frac{3}{8}$  | >        | >                    | >               |
| >    | 7 | >                 | > | >         | 2 $\frac{3}{4}$  | >        | >                    | >               |
| >    | 8 | >                 | > | >         | 3 $\frac{3}{16}$ | >        | >                    | >               |
| >    | 9 | >                 | > | >         | 3 $\frac{1}{2}$  | >        | >                    | >               |

### Subjects:

- |                                     |                              |                                               |
|-------------------------------------|------------------------------|-----------------------------------------------|
| 1. Royal Palace in Amsterdam.       | 10. Strand in Scheveningen.  | 19. Bridge over the Yssel near Kampen.        |
| 2. State Museum in Amsterdam.       | 11. Old Canal in Utrecht.    | 20. Railway Bridge over the Moordyk.          |
| 3. The Stadt Theatre, Amsterdam.    | 12. Steinweg, Utrecht.       | 21. Dam at Ynniden.                           |
| 4. The Mint in Amsterdam.           | 13. Town Hall, Utrecht.      | 22. Bed-room of a House on the Marken Island. |
| 5. Railway Bridge, Rotterdam.       | 14. Corn Exchange, Leiden.   | 23. Inside of a House on the Marken Island.   |
| 6. Erasmus Place, Rotterdam.        | 15. Church in Haarlem.       | 24. Market Day at Zaandam.                    |
| 7. Royal Palace, The Hague.         | 16. Old Delft in Delft.      |                                               |
| 8. Entrance to the Park, The Hague. | 17. Canal in Dordrecht.      |                                               |
| 9. Electoral House in Scheveningen. | 18. Town Hall in Middelburg. |                                               |

# Fine Photographic Magic Lantern Slides (Photogrammes).



The old Testament.



The new Testament.

## The old and new Testaments (each 3 slides with 4 pictures)

|       |                 |                   |                  |           |                 |          |                      |                 |
|-------|-----------------|-------------------|------------------|-----------|-----------------|----------|----------------------|-----------------|
| \$499 | 4               | with cover glass, | 1 $\frac{9}{16}$ | in. wide, | 5 $\frac{3}{4}$ | in. long | per serie = 6 slides | <b>Mk. 1.65</b> |
| >     | 4 $\frac{1}{2}$ | >                 | >                | >         | 7               | >        | >                    | >               |
| >     | 5               | >                 | >                | >         | 7 $\frac{1}{2}$ | >        | >                    | >               |
| >     | 6               | >                 | >                | >         | 2 $\frac{3}{8}$ | >        | >                    | >               |
| >     | 7               | >                 | >                | >         | 2 $\frac{3}{4}$ | >        | >                    | >               |

### Subjects:

- |                                           |                                          |
|-------------------------------------------|------------------------------------------|
| 1. The Fall of Man.                       | 1. Birth of Christ.                      |
| 2. Driven from the Garden of Eden.        | 2. The flight into Egypt.                |
| 3. Cain and Abel.                         | 3. Jesus at 12 years old, in the Temple. |
| 4. Joseph being sold by his Brothers.     | 4. Jesus being baptised by John.         |
| 5. Noah's Sacrifice.                      | 5. Jesus enters Jerusalem.               |
| 6. The merciful Samaritan.                | 6. Last Supper.                          |
| 7. David and the Giant Goliath.           | 7. Capture of Jesus.                     |
| 8. Samson kills the Lion.                 | 8. Crucifixion of Jesus.                 |
| 9. The Finding of Moses.                  | 9. Jesus on the Cross.                   |
| 10. Moses receiving the Law on Mt. Sinai. | 10. The Burial.                          |
| 11. The Emigrants.                        | 11. The Resurrection.                    |
| 12. Jacobs Dream.                         | 12. Ascending to Heaven.                 |

# Fine Photographic Magic Lantern Slides

(Photogrammes.)



## A Journey through Switzerland

Serie of 48 finely finished photographic views of the most beautiful scenes in Switzerland, taken from nature, on 12 Glass slides each with 4 views.

|        |                  |             |                |                                   |          |
|--------|------------------|-------------|----------------|-----------------------------------|----------|
| 7054/5 | with cover glass | 2 in. wide, | 7 1/4 in. long | per serie of 48 views = 12 slides | Mk. 6.85 |
| > /6   | >                | >           | 2 9/8 >        | > > 48 > = 12 >                   | > 8.75   |
| > /7   | >                | >           | 2 9/4 >        | > > 48 > = 12 >                   | > 12.20  |
| > /8   | >                | >           | 3 7/16 >       | > > 48 > = 12 >                   | > 15.-   |
| > /9   | >                | >           | 3 1/2 >        | > > 48 > = 12 >                   | > 17.50  |

### Subjects:

- |                                                                                                    |                                                      |
|----------------------------------------------------------------------------------------------------|------------------------------------------------------|
| 1. Zurich, Limmat Quay with the Cathedral.                                                         | 24. Giessbach Falls.                                 |
| 2. Lucerne, with view on the Pilatus.                                                              | 25. Staubbach Falls near Lauterbrunnen.              |
| 3. do. Chapel Bridge and Water tower.                                                              | 26. Interlaken.                                      |
| 4. do. Lion Memorial.                                                                              | 27. Jungfrau.                                        |
| 5. Pilatus Railway, most dangerous place on the Asses Wall.                                        | 28. Seynige Platte, Gummihorn and Jungfrau.          |
| 6. Alpine Post.                                                                                    | 29. Wengeralp with Liger and Mönch.                  |
| 7. Axen Road, near Brunnen on the Lake of the four forest towns.                                   | 30. Little Scheidegg and Jungfrau.                   |
| 8. Tells Chapel on the Lake of the four forest towns.                                              | 31. Grindelwald.                                     |
| 9. Lake Uri.                                                                                       | 32. On the road to Rosenlauri.                       |
| 10. Rigi Railway, Schnurtobel Bridge.                                                              | 33. Crossing a Crevasse.                             |
| 11. The Rütli.                                                                                     | 34. Zernatt with Matterhorn.                         |
| 12. Flüelen on the Lake of the four forest towns.                                                  | 35. Matterhorn, as seen from Hohbalm.                |
| 13. Altdorf.                                                                                       | 36. Thun with a view on the lake.                    |
| 14. The Gotthard Railway near Wasen.                                                               | 37. Bern with the Kirchenfeld Bridge.                |
| 15. The Devil's Bridge.                                                                            | 38. Lausanne with the Grand Pont.                    |
| 16. Andermatt and Hospenthal.                                                                      | 39. Montreux on Lake Geneva.                         |
| 17. Goscheneu.                                                                                     | 40. Castle Chillon on Lake Geneva.                   |
| 18. Airolo.                                                                                        | 41. Boat with so called Latium Sails on Lake Geneva. |
| 19. Lugano with the Mount S. Salvatore.                                                            | 42. The Rhone Glacier.                               |
| 20. Railway Bridge over the Lugano Lake, the villages Melide and Bissonne with the Mount Generoso. | 43. Monte Rosa.                                      |
| 21. Iseltwald on the Brienz Lake.                                                                  | 44. Falls of the Rhine near Schaffhausen.            |
| 22. Meiringen.                                                                                     | 45. Oeschinen Lake.                                  |
| 23. Reichenbach Falls near Meiringen.                                                              | 46. Murren and the Alpes.                            |
|                                                                                                    | 47. St. Beatenberg.                                  |
|                                                                                                    | 48. Caux, Grand Hotel and Rocher de Naye.            |

## Short Glass Photogrammes with cover glass for Sciopticons.



7055

## A Journey through Switzerland

Serie of 48 finely finished photographic views of the most beautiful scenes in Switzerland, taken from Nature (3 1/4 x 3 1/4 in.).

|      |         |                          |                      |           |
|------|---------|--------------------------|----------------------|-----------|
| 7055 | Serie I | Subjects 1—24 (as above) | per serie = 24 views | Mk. 17.50 |
| >    | > II    | > 25—48                  | > > = 24 >           | > 17.50   |

### 9434/8 1/2 Views from Holland

A serie of 24 Views, subjects as described under No. 9457/1—24 page 193  
3 1/4 in. wide, 4 in. long . . . . . per serie = 24 views Mk. 18.

Slide Carriers, fitting to slides of 3 1/4 x 3 1/4 in. and 3 1/4 x 4 in. size see page 200.

# Glass Photogrammes with cover glass finely finished for Sciopticons, Dissolving View Apparati and better Magic Lanterns.



6866/8 1/2

6866 8 1/2 3 1/4 in. wide, 3 1/4 in. long . . . . . each Mk. —.65

## Rhineland.

1. View on Königawinter.
2. Niederwald-Memorial.
3. St. Goar and St. Goarshausen.
4. View on the Loreley Rock.
5. Castle Rheinstein.
6. Ems.
7. Drachenfels.
8. Mice Tower near Bingen.
9. Dome in Cologne.

## The Hartz.

10. Landscape in the Bodethal.
11. Landscape in the Ilsethal.
12. Blankenburg, Castle.
13. Thale, Devils Bridge.
14. Rubeland, Grotto Brewery.
15. Harzburg, Bathing Establishment.

## Saxon Switzerland.

16. Bulwark Rock.
17. Prehisch Gate.
18. Schandau from the Elbe.
19. Elbe near Schandau.
20. Birds Field, Dresden.

## Thuringen.

21. Landscape in the Schwarzathal.
22. Castle Reinhardsbrunn.
23. Ruin Castle Liebenstein.
24. Wartburg.
25. Wartburg, Castle yard.
26. Wartburg, Hall of the Knights.

## German Towns.

27. Berlin, Unter den Linden.
28. " Brandenburger Gate.
29. " National Memorial Emperor William I.
30. " Bismarck Memorial and House of Parliament.
31. " Sieges Alley; Memorial to The Great Elector.
32. " Victory Memorial Emperor William I.
33. Potsdam, Marble Gallery.
34. Hamburg, Scene of the harbour.
35. Heligoland, Main Street.

36. Heligoland, view of the low country.
37. Frankfurt on M., The Römer.
38. " " The Opera House.
39. Wiesbaden, Assembly Rooms.
40. Heidelberg, Ruin of Castle.
41. Bayreuth, Villa Wahnfried.
42. Kissingen.

## Riesengebirge.

43. New Silesian Bunde.
44. Hotel Schneekoppe in Krummhübel.
45. Horn Sledging Excursion.
46. Warmbrunn, Castle yard.
47. Great Boberviaduct.
48. Weckelsdorf, Ice Bear.

## Bavarian and Austrian Alps.

49. Cortina in Tyrol.
50. Alt Prags in Tyrol.
51. Scenery near Gastein.
52. Lake Traun.
53. Gossensass in Tyrol.
54. Berchtesgaden.
55. Salzburg.
56. Grossglockner.
57. Oberammergau.
58. Hohenschwangau.
59. Linderhof.
60. Herrenchiemsee.
61. Neuschwanstein.

## Switzerland.

62. Axenstrasse.
63. Rhinefall and Castle Lauffen.
64. Zermatt.
65. Interlaken.
66. View on Interlaken and Jungfrau.
67. Grindelwald Glacier.
68. Rigi Railway.
69. Aletsch Glacier.
70. Rigistaffel and Kulm.
71. Tells Chapel.
72. Amsteg.
73. Brunnen and the Mythen.
74. Geneva.

## Italy.

75. Venice, Canal scene.
76. Rome, Forum Trajani.

77. Pompeii, Panorama.
78. Milano, Victor Emanuel Gallery.
79. " Interior of Dome.
80. Isola bella, Grotto formed of shell work.
81. Florence, Place San Maria Novella.
82. Naples, San Elmo.
83. " Santa Lucia.
84. Nizze.
85. Forum Romanum.
86. Blue Grotto, Capri.

## Lake Garda.

87. Gardone.
88. Limone.
89. Riva.
90. Salo.
91. Torbole.
92. Fasano.

## From Far and Near.

93. Abbazin Shore.
94. New York, the Harbour.
95. Paris, l'Orte St. Denis.
96. " Place de la Concorde.
97. " Notre-dame.
98. Miramare.
99. Jerusalem, Interior of the Cemetery Church.
100. Jerusalem, looking eastwards.
101. Cairo, Sphinx and Cheops Pyramid.
102. On the Coast of Norway.
103. Budapest.
104. Washington, White House.
105. Niagara Falls.
106. Stockholm, Clubhouse.
107. Japan, Street in Tokio.
108. " Procession in Tokio.
109. " Wiskary flowers.
110. China, Fencer.
111. " Cactus in bloom.
112. Stavanger.
113. Fiord at Loenvand.
114. Ice Cave at Suppelle-Brae.
115. Landscape at the Geirange Fiord.
116. Bergen (Harbour).
117. Tromsø (Harbour).
118. Anafit with the land-slip.
119. Doves of St. Mark.
120. On board a man of war.

*We are always adding to the subjects of these views and when required, we can deliver a number of views from England and America.*

Slide Carriers, fitting to slides of 3 1/4 x 3 1/4 in. size see page 200.

# Glass Photogrammes

finely finished with cover glass and border.



8871



8898

## Statues

|                                  |                                         |                                         |                 |                                   |      |     |       |
|----------------------------------|-----------------------------------------|-----------------------------------------|-----------------|-----------------------------------|------|-----|-------|
| 8871/6                           | 2 <sup>3</sup> / <sub>8</sub> in. wide, | 3 <sup>1</sup> / <sub>8</sub> in. long, | Size of picture | 1 <sup>3</sup> / <sub>4</sub> in. | each | Mk. | — .65 |
| » /8                             | 3 <sup>1</sup> / <sub>8</sub> »         | » 4 »                                   | » »             | 2 <sup>3</sup> / <sub>8</sub> »   | »    | »   | — .75 |
| » /8 <sup>1</sup> / <sub>2</sub> | 3 <sup>1</sup> / <sub>4</sub> »         | » 4 »                                   | » »             | 2 <sup>3</sup> / <sub>4</sub> »   | »    | »   | 1. —  |
| » /10                            | 4 »                                     | » 4 <sup>3</sup> / <sub>4</sub> »       | » »             | 2 <sup>3</sup> / <sub>4</sub> »   | »    | »   | 1.20  |

## Subjects:

- |                                    |                                   |                              |
|------------------------------------|-----------------------------------|------------------------------|
| 1. Spring by Thorwaldsen.          | 12. Mercury.                      | 23. Venus of Medici.         |
| 2. Summer »                        | 13. Diana with the Stag.          | 24. Venus on the Shell.      |
| 3. Autumn »                        | 14. Euterpe.                      | 25. Venus in the shell.      |
| 4. Winter »                        | 15. Hebe.                         | 26. Venus bathing.           |
| 5. Day »                           | 16. Flora.                        | 27. Cupid with the plough.   |
| 6. Night »                         | 17. Apollo by Belvedere.          | 28. The 3 Graces.            |
| 7. Valkyria by »                   | 18. Comedy.                       | 29. Apollo and Daphne.       |
| 8. Ariadne on the Panther.         | 19. Tragedy.                      | 30. Ganymede.                |
| 9. Christ by Thorwaldsen.          | 20. Cupid and Psyche.             | 31. Bacchus with the grapes. |
| 10. Diana.                         | 21. Adonis and Hebe.              | 32. Bacchus in the basket.   |
| 11. The return from the lion hunt. | 22. Jason with the golden fleece. |                              |

## From the Old Testament.

|                                  |                                         |                                         |                 |                                   |      |     |       |
|----------------------------------|-----------------------------------------|-----------------------------------------|-----------------|-----------------------------------|------|-----|-------|
| 8898/6                           | 2 <sup>3</sup> / <sub>8</sub> in. wide, | 3 <sup>1</sup> / <sub>8</sub> in. long, | Size of picture | 1 <sup>3</sup> / <sub>4</sub> in. | each | Mk. | — .45 |
| » /8                             | 3 <sup>1</sup> / <sub>8</sub> »         | » 4 »                                   | » »             | 2 <sup>3</sup> / <sub>8</sub> »   | »    | »   | — .60 |
| » /8 <sup>1</sup> / <sub>2</sub> | 3 <sup>3</sup> / <sub>8</sub> »         | » 4 »                                   | » »             | 2 <sup>3</sup> / <sub>4</sub> »   | »    | »   | — .75 |
| » /10                            | 4 »                                     | » 4 <sup>3</sup> / <sub>4</sub> »       | » »             | 2 <sup>3</sup> / <sub>4</sub> »   | »    | »   | — .95 |

## Subjects:

- |                             |                                 |                                      |
|-----------------------------|---------------------------------|--------------------------------------|
| 1. Let there be light.      | 5. Sending forth the Dove.      | 9. Joseph and his brothers.          |
| 2. Expulsion from Paradise. | 6. Building the Tower of Babel. | 10. Moses' wonderful deliverance.    |
| 3. Death of Abel.           | 7. The rescue of Lot.           | 11. Moses descends from Mount Sinai. |
| 4. The Flood.               | 8. Jacob's Dream.               | 12. Samson kills a lion.             |

## From the New Testament.

|                                  |                                         |                                   |                 |                                   |      |     |       |
|----------------------------------|-----------------------------------------|-----------------------------------|-----------------|-----------------------------------|------|-----|-------|
| 8944/8                           | 3 <sup>1</sup> / <sub>8</sub> in. wide, | 4 in. long,                       | Size of picture | 2 <sup>3</sup> / <sub>8</sub> in. | each | Mk. | — .60 |
| » /8 <sup>1</sup> / <sub>2</sub> | 3 <sup>3</sup> / <sub>8</sub> »         | » 4 »                             | » »             | 2 <sup>3</sup> / <sub>4</sub> »   | »    | »   | — .75 |
| » /10                            | 4 »                                     | » 4 <sup>3</sup> / <sub>4</sub> » | » »             | 2 <sup>3</sup> / <sub>4</sub> »   | »    | »   | — .95 |

## Subjects:

- |                                         |                               |                       |
|-----------------------------------------|-------------------------------|-----------------------|
| 1. Birth of Christ.                     | 5. The Daughter of Jairus.    | 9. Capture of Christ. |
| 2. Flight to Egypt.                     | 6. The Feeding of the People. | 10. Crucification.    |
| 3. The 12 year old Jesus in the temple. | 7. The Entry into Jerusalem.  | 11. Resurrection.     |
| 4. Baptism of Christ.                   | 8. The holy Communion.        | 12. Ascension.        |

## Scientific Slides.

|                                  |                                         |                                         |                      |                                   |      |     |       |
|----------------------------------|-----------------------------------------|-----------------------------------------|----------------------|-----------------------------------|------|-----|-------|
|                                  | Serie a. Ethnology.                     | Serie b. Zoology.                       | Serie c. Microscopy. | Serie d. Botany.                  |      |     |       |
| 8948/6                           | 2 <sup>3</sup> / <sub>8</sub> in. wide, | 3 <sup>1</sup> / <sub>8</sub> in. long, | Size of picture      | 1 <sup>3</sup> / <sub>4</sub> in. | each | Mk. | — .48 |
| » /8                             | 3 <sup>1</sup> / <sub>8</sub> »         | » 4 »                                   | » »                  | 2 <sup>3</sup> / <sub>8</sub> »   | »    | »   | — .60 |
| » /8 <sup>1</sup> / <sub>2</sub> | 3 <sup>3</sup> / <sub>8</sub> »         | » 4 »                                   | » »                  | 2 <sup>3</sup> / <sub>4</sub> »   | »    | »   | — .75 |
| » /10                            | 4 »                                     | » 4 <sup>3</sup> / <sub>4</sub> »       | » »                  | 2 <sup>3</sup> / <sub>4</sub> »   | »    | »   | — .95 |

## Pictorial Views from Germany, Switzerland and Italy.

|                                  |                                         |                                         |                 |                                   |      |     |       |
|----------------------------------|-----------------------------------------|-----------------------------------------|-----------------|-----------------------------------|------|-----|-------|
| 8946/6                           | 2 <sup>3</sup> / <sub>8</sub> in. wide, | 3 <sup>1</sup> / <sub>8</sub> in. long, | Size of picture | 1 <sup>3</sup> / <sub>4</sub> in. | each | Mk. | — .45 |
| » /8                             | 3 <sup>1</sup> / <sub>8</sub> »         | » 4 »                                   | » »             | 2 <sup>3</sup> / <sub>8</sub> »   | »    | »   | — .60 |
| » /8 <sup>1</sup> / <sub>2</sub> | 3 <sup>3</sup> / <sub>8</sub> »         | » 4 »                                   | » »             | 2 <sup>3</sup> / <sub>4</sub> »   | »    | »   | — .75 |

Slide Carriers fitting to slides of 3<sup>1</sup>/<sub>4</sub> × 3<sup>1</sup>/<sub>4</sub> in. and 3<sup>1</sup>/<sub>4</sub> × 4 in. size see page 200.

# Fine hand painted Slides in wood Frames.

The following hand painted Slides Nos. 8918, 8919, 8920, 8952 we always keep in stock in large quantities. It is however possible in the advanced season, November and December, that we may run short of one or other of the various subjects. In this case we reserve the right of substituting a similar subject for those which cannot be got round in time, unless orders to the contrary are received.



8918

## Fixed Landscapes in wood frames (hand paintings).

|          | 8918 2 | 2 <sup>3</sup> / <sub>8</sub> | 2 <sup>3</sup> / <sub>4</sub> | 3 <sup>1</sup> / <sub>8</sub> | 3 <sup>1</sup> / <sub>2</sub> | 4 in. |
|----------|--------|-------------------------------|-------------------------------|-------------------------------|-------------------------------|-------|
| each Mk. | —65    | 1.—                           | 1.30                          | 1.60                          | 2.—                           | 2.70  |

- |                                                          |                         |                                                   |
|----------------------------------------------------------|-------------------------|---------------------------------------------------|
| 1 & 2. Lion Castle near Cassel.                          | (summer and winter).    | 69. Jerusalem.                                    |
| 3 & 4. Law Courts at Liege                               | (day and night).        | 70. Entrance Hall at the Borgnese Palace in Rome. |
| 5 & 6. Carlstein, Bohemia.                               | do.                     | 71. Schonbrunn Castle.                            |
| 7 & 8. Orlyphus near Stockholm.                          | (summer and winter).    | 72. Perava Malva in India.                        |
| 9 & 10. Brenner Railway.                                 | do.                     | 73. Franz Joseph's hut near Ischl.                |
| 11 & 12. Hofer's house.                                  | do.                     | 74. Cecilia Metella grave near Rome.              |
| 13 & 14. Haarlem Gate in Antwerp.                        | do.                     | 75. Janina (Italy).                               |
| 15 & 16. St. Maurice Bridge, Switzerland                 | do.                     | 76. Thun in Switzerland.                          |
| 17 & 18. Rheinfelden.                                    | do.                     | 77. Grave of Absolom.                             |
| 19 & 20. Rosenau Castle near Coburg.                     | do.                     | 78. Pagoda at Gukul.                              |
| 21 & 22. Riva on the Lake Garda.                         | (day and night).        | 79. Falls of Geroldsau.                           |
| 23 & 24. Godesberg on the Rhine.                         | do.                     | 80. Forum Romanum in Rome.                        |
| 25 & 26. The Wartburg.                                   | do.                     | 81. Ruins of Sperberstein.                        |
| 27 & 28. Hohnstein, Saxony.                              | do.                     | 82. Bregeance on Lake Constance.                  |
| 29 & 30. Stansstad on the lake of 4 forest towns         | do.                     | 83. Entrance Hall of a mosque.                    |
| 31 & 32. Lichtenstein castle.                            | do.                     | 84. Cordova in Spain.                             |
| 33 & 34. Moneo in India.                                 | do.                     | 85. Scenery on the San Juan in America.           |
| 35 & 36. Florence.                                       | do.                     | 86. Cross path of the abbey Alcobaca, Portugal.   |
| 37 & 38. Rheineck castle.                                | do.                     | 87. Royal Palace in Lahore.                       |
| 39 & 40. Torbolo, Italy.                                 | do.                     | 88. A mandarin's residence in China.              |
| 41 & 42. Ruins of Schadeck.                              | (summer and winter).    | 89. Siegesthor in Berlin.                         |
| 43 & 44. Morgarten, Switzerland.                         | do.                     | 90. Ruins of Kenilworth Castle, Scotland.         |
| 45 & 46. Chantilly Castle.                               | do.                     | 91. St. Anna Chapel near Naples.                  |
| 47 & 48. Ambras Castle, Tyrol.                           | do.                     | 92. Street in Cairo.                              |
| 49 & 50. The interior of the cathedral in Milano.        | (day and night).        | 93. Subea Sphynx in Nubia.                        |
| 51 & 52. Tower of London.                                | (at night and burning). | 94. Ehrenfels on the Rhine.                       |
| 53 & 54. Naples (day and with the eruption of Vesuvius). |                         | 95. On the Bosphorus.                             |
| 55. Temple at Edfu.                                      |                         | 96. Rocks near Heligoland.                        |
| 56. Laszinsky Palace at Warsaw.                          |                         | 97. The Cascades of Terni, Italy.                 |
| 57. Wilhemshöhe near Cassel.                             |                         | 98. Bethlehem.                                    |
| 58. Castle Letzingen.                                    |                         | 99. Ruins of Theben.                              |
| 59. White House at Washington.                           |                         | 100. Miramare Castle.                             |
| 60. Niagara Falls.                                       |                         | 101. Stolzenfels on the Rhine.                    |
| 61. Rigi Kulm.                                           |                         | 102. The Memnon columns.                          |
| 62. Windsor Castle.                                      |                         | 103. The Ruins of Futeopor.                       |
| 63. Cathedral at Speyer.                                 |                         | 104. Reichenbach and the Wellborn.                |
| 64. Harbour of Genoa.                                    |                         | 105. Isle of Murano near Venice.                  |
| 65. View of Rome.                                        |                         | 106. The Rhinefall at Schaffhausen.               |
| 66. Venice.                                              |                         | 107. Rudelsburg.                                  |
| 67. London.                                              |                         | 108. The pyramids of Gizeh.                       |
| 68. Prabish Gate, Saxony.                                |                         | 109. Cloister Laachen.                            |
|                                                          |                         | 110. Brembrock Castle.                            |

# Fine hand painted Slides in wood frames.

(See remark page 197.)



8919

## Movable Landscapes in wood frames (hand painted).

| 8919/2       | 2 <sup>3</sup> / <sub>8</sub> | 2 <sup>3</sup> / <sub>4</sub> | 3 <sup>1</sup> / <sub>8</sub> | 3 <sup>1</sup> / <sub>2</sub> | 4 in. wide |
|--------------|-------------------------------|-------------------------------|-------------------------------|-------------------------------|------------|
| each Mk. 1.— | 1.20                          | 1.50                          | 2.10                          | 2.50                          | 3.40       |

1. Landscape on the Nile (an illuminated boat passes).
2. Boat in the Arctic regions (Polar Bears).
3. Heidelberg Castle (torchlight procession of students).
4. The interior of a mine (Miners at work).
5. The Wetterhorn (Alp-glow).
6. Cologne on the Rhine (a steamer passing).
7. Castle Leopoldskron (passing swans).
8. Blue Grotto at Capri (illuminated).
9. October festivities at Munich (race).
10. Churchyard Père la Chaise (arrival of a funeral procession).
11. Niederwald Memorial (a steamer passing).
12. Esquimaux cottages (with reindeer sledges).
13. Lighthouse near Liverpool at night (steamer).
14. Liberty Statue at New York (illuminated).
15. Cloister hall near Rome (moon rising).
16. Harbour (Ship being unloaded).
17. Views of a town in winter (sledges with torchlights).
18. Castle ruin (Sailing vessel passes).
19. View of Buffalo (a balloon passing).
20. Bibrich Castle on the Rhine (Regatta).
21. Street in Venice (with gondola).
22. Catacombes of Rome (illuminated).
23. Kamia in Asia (arriving caravan).
24. In the high mountains (smugglers).
25. Railway bridge near Verviers (a train arrives).
26. Rocius castle (at sunrise).
27. Forge at night (a sledge arrives).
28. Lombard Bridge at Hamburg (train).
29. St. Gotthard Railway (arrival of a train).
30. Arctic pole with north light (Deer Sledges).
31. Rialto bridge at Venice (gondola at night).
32. Wengeralp (Alp glow).
33. St. Bernhard Refuge (transport of a frozen man).
34. Arch Rock at Ettershausen (arrival of a train).
35. Bridge near Amsteg (a cart passes).
36. Lighthouse at Cape Finisterre (steamers).
37. Isle of Heligoland (a sailing vessel passes).
38. Cloister Rheinau (arrival of a procession).
39. Funeral in the Arctic regions (procession of sailors).
40. Fluelen, Switzerland (a boat with visitors).
41. Isle of Mainau (arrival of a train).
42. On the Mississippi (passing steamers).
43. Rotterdam (passing transport steamer).
44. Tetschen on the Elbe (passing transport steamer).
45. Bridge over the Mincio (arrival of a train).
46. Dutch Landscape (skaters).
47. Castle Berg (at night).
48. On the Caspian Sea (dog sledges).
49. Coblenze, railway bridge (arrival of a train).
50. Rolandseck (moon rise).
51. London Bridge (an illuminated boat passes).
52. St. Marks church Venice (arrival of a procession).
53. Sphinx of Subea (arrival of a caravan).
54. Tell's chapel (boat with visitors).
55. Montfleurs in winter (sledge arriving).
56. Zillertal (passing herd).
57. Rope Bridge in Asia (Carriers).
58. On the Bosphorus (a drive with the paschal).
59. Fraueninsel in the Chiemsee (Boat with hay).
60. On the shore of Greenland (Whaling).
61. A forest scene (a herd of deer).
62. Railway bridge over the Niagara (arrival of a train).
63. Burning house (arrival of fire brigade).
64. Edystone lighthouse (Ships arrive).
65. Seenery in the primaeval forest (boat with Indians passes).
66. Mountain Ridge of Uri (sledges).
67. Cloister hall in the Normandy (midnight service).
68. Railway bridge over the Hijo (arrival of a train).
69. Stromboli volcano (a sailing vessel passes).
70. Scene in Siberia (transportation of prisoners).
71. Kurhaus at Wiesbaden.
72. Hunting seat in the forest (return of the hunters).
73. Leaving the steamer Hansa (sailors passing).
74. Chillon castle (steamer passing).
75. Nebelhöhle on the Hartz (illuminated).
76. Castle ruin at night (passing boats).
77. Christmas mass in the country (peasants going to church).
78. Ancestors vault at night (illuminated).
79. Rheinfelden (a cart arrives).
80. Forest church in Switzerland (sunrise).
81. Allerheiligen Ruin (moon rises).
82. Mont Cenis Railway (arrival of a train).
83. Aquarium.
84. Hall of the Knights (moonlight).
85. Negro cottages in Africa (chief and warriors).
86. View of a park at night (illuminated gondolas).
87. Prairie fire (passing train).
88. Ostrich hunting.
89. Condorf on the Moselle.
90. Landscape, the Rigi Railway (arrival of a train).
91. Returning fishermen (moonlight).
92. Cornwallis Mines (Miners).
93. Hague, Holland (skaters at night).
94. Landscape of the Rorsbach Railway (arrival of a train).
95. In the perpetual ice (sailing vessel).
96. Childs dream (Christmas).
97. Cloister Melk (with illuminated windows).
98. Canal at Rotterdam (tugging a boat).
99. In the Pyrenees (travellers).
100. Heidelberg (sailing vessels).
101. St. Bartholomew Cloister on the Konigsee (returning monks).



## Fine hand painted Slides in wood frames.



8920

see remark page 197.



8952

### Lever Pictures in wood frames (hand painted)

|          | 8920/2 | 2 <sup>3</sup> / <sub>8</sub> | 2 <sup>3</sup> / <sub>4</sub> | 3 <sup>1</sup> / <sub>8</sub> | 3 <sup>1</sup> / <sub>2</sub> | 4 in. wide |
|----------|--------|-------------------------------|-------------------------------|-------------------------------|-------------------------------|------------|
| each Mk. | 1.—    | 1.20                          | 1.50                          | 2.10                          | 2.40                          | 3.40       |

- |                               |                                 |                                 |
|-------------------------------|---------------------------------|---------------------------------|
| 1. The faithful horse.        | 13. Ball-runner.                | 25. Night revellers.            |
| 2. Swinging.                  | 14. Blindman's buff.            | 26. Giraffe feeding.            |
| 3. The speculator.            | 15. A diving Swan.              | 27. Newspaper reader.           |
| 4. Rolling boat.              | 16. A light if you please!      | 28. Forest idyl (drinking roe). |
| 5. Stone breaker.             | 17. The reading monkey.         | 29. Monkey without his keeper.  |
| 6. Stubborn donkey.           | 18. The malicious goat.         | 30. The thirsty butler.         |
| 7. Shoemakers boy as a nurse. | 19. Joyful John.                | 31. Christmas joy.              |
| 8. Drinking stag.             | 20. The long nose.              | 32. Italian praying.            |
| 9. Watch-man.                 | 21. Drinking bird.              | 33. Grand-father's joy.         |
| 10. The malicious fly.        | 22. Rope Dancer.                | 34. The excited goose.          |
| 11. Mister sniveller.         | 23. Little dainty.              | 35. Knife grinder.              |
| 12. Good night.               | 24. The elephant in the desert. | 36. The swallow.                |

### Comic Moving pictures in wood frames (hand painted)

|          | 8952/2 | 2 <sup>3</sup> / <sub>8</sub> | 2 <sup>3</sup> / <sub>4</sub> | 3 <sup>1</sup> / <sub>8</sub> | 3 <sup>1</sup> / <sub>2</sub> | 4 in. wide |
|----------|--------|-------------------------------|-------------------------------|-------------------------------|-------------------------------|------------|
| each Mk. | — .75  | 1.—                           | 1.35                          | 1.65                          | 2.10                          | 2.40       |

- |                              |                                               |                                      |
|------------------------------|-----------------------------------------------|--------------------------------------|
| 1. Monkey and cat.           | 16. Miller and donkey.                        | 29. The juggler.                     |
| 2. Clown conjuring flowers.  | 17. The nightmare.                            | 30. John going to bed, falls through |
| 3. Bear leader.              | 18. Aunt and monkey.                          | 31. Girls joys.                      |
| 4. Michael weeps and laughs. | 19. Tailor and wasp.                          | 32. Monkey circus.                   |
| 5. The alarmed painter.      | 20. Hansel and Gretel, kissing.               | 33. Shoemaker cleaning boots.        |
| 6. The Recruit.              | 21. The same, 50 years later.                 | 34. The mysterious barrel.           |
| 7. The extinguisher.         | 22. Head of a lion with rolling eyes.         | 35. Nantes's eyes.                   |
| 8. Good-health!              | 23. The surprised cook.                       | 36. The elephant and his keeper.     |
| 9. The good grandfather.     | 24. Michael going to market with<br>cabbages. | 37. The bird.                        |
| 10. 10 minutes interval.     | 25. The important astronomer.                 | 38. The umbrella.                    |
| 11. The malicious monkey.    | 26. Punished curiosity.                       | 39. The teasing boy.                 |
| 12. A thirsty soul.          | 27. The barber.                               | 40. Mid-wife.                        |
| 13. Beware of pickpockets.   | 28. Nine-pins.                                | 41. Attention!                       |
| 14. Knight Rupprecht.        |                                               | 42. Gymnast on the parallel bar.     |
| 15. Fisherman's adventure.   |                                               |                                      |

## Fine hand painted scientific Slides in wood frames.

### Microscopy in 24 pictures with text

|                             | 8958/3 <sup>1</sup> / <sub>8</sub> | 3 <sup>1</sup> / <sub>2</sub> | 4 in. wide |
|-----------------------------|------------------------------------|-------------------------------|------------|
| per serie = 24 pictures Mk. | 20.—                               | 24.—                          | 30.—       |

### Astronomy in 20 pictures with text

|                             | 8959/3 <sup>1</sup> / <sub>8</sub> | 3 <sup>1</sup> / <sub>2</sub> | 4 in. wide |
|-----------------------------|------------------------------------|-------------------------------|------------|
| per serie = 20 pictures Mk. | 25.50                              | 28.—                          | 34.—       |

### Geology in 36 pictures with text

|                             | 8960/3 <sup>1</sup> / <sub>8</sub> | 3 <sup>1</sup> / <sub>2</sub> | 4 in. wide |
|-----------------------------|------------------------------------|-------------------------------|------------|
| per serie = 36 pictures Mk. | 29.50                              | 35.—                          | 42.—       |

### The Sea in 30 pictures with text

|                             | 8963/3 <sup>1</sup> / <sub>8</sub> | 3 <sup>1</sup> / <sub>2</sub> | 4 in. wide |
|-----------------------------|------------------------------------|-------------------------------|------------|
| per serie = 30 pictures Mk. | 24.—                               | 27.50                         | 32.50      |



## New discs

fitting to the Boseo Lanterns  
1450 and 1460.



1. Ice region.
2. Juvenile Scenes.
3. Tropical pictures.
4. New Testament.

5. Switzerland.
6. Red Riding Hood.
7. Snow white.
8. Hansel and Gretel.

9. Clown Games.
10. Natural Phenomena.
11. Comical scenes.
12. Comical animal scenes.

|              |                         |     |                    |      |         |
|--------------|-------------------------|-----|--------------------|------|---------|
| 13239/10     | without cover glass, 4  | in. | diameter . . . . . | each | Mk. —17 |
| > /11 1/2    | > > > 4 1/2             | >   | > > > >            | >    | > —21   |
| 13314/11 1/2 | with cover glass, 4 1/2 | >   | >                  | >    | > —27   |
| > /15        | > > > 5                 | >   | >                  | >    | > —45   |



9060

fitting to short Slides and Photogrammes for  
Scioptions

|        |                                                |      |          |
|--------|------------------------------------------------|------|----------|
| 9060/1 | for slides of 3 1/4 x 3 1/4 in. size . . . . . | each | Mk. 1.50 |
| > /2   | > > > 3 1/4 x 4                                | >    | > 1.50   |

## Snowing Machines for Dissolving View Apparati

to change a summer landscape into a winter landscape or to produce snowing when showing a winter landscape, completely finished in metal, very strong.



6640

|        |                       |      |         |
|--------|-----------------------|------|---------|
| 6640/5 | 2 in. wide . . . . .  | each | Mk. —50 |
| > /6   | > 2 3/8 > > . . . . . | >    | > —60   |
| > /7   | > 2 3/4 > > . . . . . | >    | > —65   |
| > /8   | > 3 1/8 > > . . . . . | >    | > —75   |
| > /9   | > 3 1/2 > > . . . . . | >    | > —85   |



7021 Reading Lamp, very practical.

## 7021 Reading Lamp.

By using this reading lamp, the entertainer is enabled to read his text without at all interfering with the reflections of the pictures, as owing to the adjustable shutter the light shines only on the text.

Finely japanned, with petroleum lamp with flat burner and shutter.

|                           |      |          |
|---------------------------|------|----------|
| 10 1/2 in. high . . . . . | each | Mk. 1.75 |
|---------------------------|------|----------|

# Stereoscopes

very strongly and elegantly finished with best quality optical lenses.



358

## 358 American Form Stereoscopes

stained alder wood with 2 prisms  $1 \times 1$  in., with sliding picture holder and folding wood handle

each Mk. —.75



355

## American Form Stereoscopes

with 2 prisms  $1\frac{1}{4} \times 1\frac{3}{8}$  in., sliding picture holder and folding wood handle

|                   |                                                     |      |          |
|-------------------|-----------------------------------------------------|------|----------|
| 355/1             | Real walnut wood, stained . . . . .                 | each | Mk. 1.35 |
| > / $\frac{1}{2}$ | > > > with plush border . . . . .                   | > >  | 1.50     |
| > / 2             | > > > finely polished, with plush border > >        | > >  | 2.10     |
| > / $\frac{2}{3}$ | > mahogany > > > > > >                              | > >  | 2.10     |
| > / 3             | Finely polished, black, with plush border . . . . . | > >  | 2.20     |



356

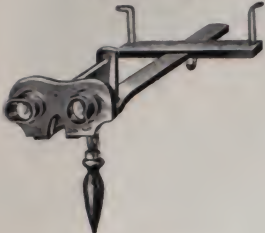
## American Form Stereoscopes

with 2 prisms  $1\frac{1}{2} \times 1\frac{1}{2}$  in. sliding picture holder and folding wood handle

|                   |                                                     |      |          |
|-------------------|-----------------------------------------------------|------|----------|
| 356/1             | Real walnut wood, stained . . . . .                 | each | Mk. 1.50 |
| > / $\frac{1}{2}$ | > > > with plush border . . . . .                   | > >  | 1.65     |
| > / 2             | > > > finely polished, with plush border > >        | > >  | 2.30     |
| > / $\frac{2}{3}$ | > mahogany > > > > > >                              | > >  | 2.30     |
| > / 3             | Finely polished, black, with plush border . . . . . | > >  | 2.35     |

# Stereoscopes

very strongly and elegantly finished with best quality optic lenses.



357

## 357 American Form Stereoscopes

**Stained Alder wood**

with **2 oculars** with lenses of  $1\frac{1}{2}$  in. diameter, sliding picture holder  
and folding wood handle

each **Mk.** 1.35



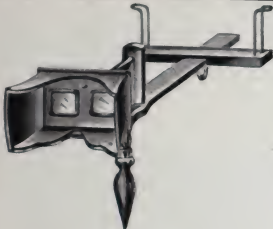
359 original

## 359 American Form Stereoscopes

**Real stained walnut wood**

with **2 oculars**, with lenses of  $1\frac{1}{2}$  in. diameter, sliding picture frame  
and folding wood handle

each **Mk.** 2.25



375

## American Form Stereoscopes

with **2 prisms**,  $1\frac{1}{2} \times 1\frac{1}{2}$  in. with **large hood**, sliding picture holder  
and folding wood handle.

375/1 Real mahogany wood, finely polished . . . . . each **Mk.** 3.60  
> /2 Real walnut wood, finely polished . . . . . > > 3.60



363 with sliding prisms.

## New American Form Stereoscopes

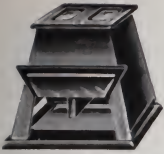
with lateral moving prisms

with **2 prisms**  $1\frac{1}{2} \times 1\frac{1}{2}$  in., sliding picture holder and folding wooden handle

363/1 Real stained walnut wood, with polished hood, each **Mk.** 3.40  
> /2 Real stained walnut wood, with polished  
hood and plush border . . . . . > > 3.50

# Stereoscopes

very strongly and elegantly finished with best quality optic lenses.



350

## 350 Stereoscopes

straight form

Mahogany polished wood, with 2 prisms  $1\frac{1}{4} \times 1\frac{3}{8}$  in. flap with tin foil reflector and frosted glass back,  $7\frac{3}{4}$  in. long,  $6\frac{3}{4}$  in. high . . . . . each **Mk. 1.90**



351 &amp; 352

## Stereoscopes

curved form

with 2 prisms  $1\frac{1}{4} \times 1\frac{3}{8}$  in. and frosted glass back,  $7\frac{3}{4}$  in. long,  $6\frac{3}{4}$  in. high

- 351 Real stained American walnut, flap with tin foil reflector . . . . . each **Mk. 1.95**  
 352/1 Real Mahogany wood, finely polished, flap with mirror > > **2.35**  
 > /2 Real American walnut, > > > > > > **2.35**



353

## Stereoscopes

with 2 oculars, diameter of lens  $1\frac{1}{4}$  in., flap with mirror, with frosted glass back,  $7\frac{3}{4}$  in. long, 6 in. high

- 353/1 Real Mahogany wood, finely polished . . . . . each **Mk. 3.—**  
 > /2 Real American walnut wood, finely polished . . . > > **3.—**



360

## Stereoscopes

with 2 screwed oculars, diameter of lens  $1\frac{1}{4}$  in., with cog wheel for adjusting to suit all eyes, with mirror and frosted glass back

- 360/1 Real Mahogany wood, finely polished . . . . . each **Mk. 7.40**  
 > /2 Real American walnut wood, finely polished . . . > > **7.40**



361

## Stereoscopes

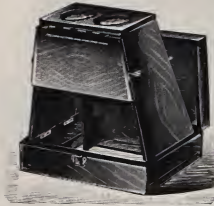
opera glass form, with 2 screwed oculars, diameter of lens  $1\frac{1}{4}$  in., with cog wheel for adjusting to suit all eyes, with mirror and frosted glass back

- 361/1 Real Mahogany wood, finely polished . . . . . each **Mk. 8.25**  
 > /2 Real American walnut wood, finely polished . . . > > **8.25**

*For Stereoscopic Views see page 205.*

## Stereoscopes

very strongly and elegantly finished with best quality optic lenses.



354 folding

### 354 Stereoscopes

folding, practical for travelling

Mahogany polished wood with 2 prisms  $1\frac{1}{4} \times 1\frac{3}{8}$  in.

7 in. high,  $7\frac{1}{2}$  in. long . . . . . each Mk. 2.40

*For Stereoscopic Views see page 205.*

## Microphores Magnifying Apparati for Photographs.

### Microphores

with sliding picture holder

very strongly and elegantly finished, with best optic lenses.



370, 371 &amp; 372

**370 Mahogany polished wood, lens  $2\frac{1}{2}$  in. diam.**

6 in. long,  $3\frac{1}{2}$  in. wide . . . . . each Mk. 1.40

**371 Mahogany polished wood, lens 3 in. diam.**

$8\frac{1}{4}$  in. long,  $4\frac{3}{4}$  in. wide . . . . . » » 2.15

**372 Real mahogany polished wood, lens  $3\frac{3}{8}$  in. diam.**

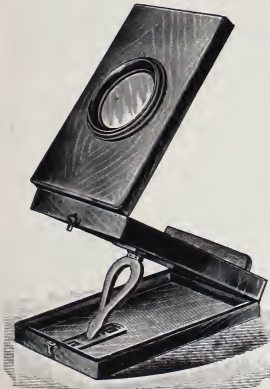
$8\frac{1}{4}$  in. long,  $5\frac{1}{4}$  in. wide . . . . . » » 3.75

*Views for above Microphores see page 206.*

### Microphores

with sliding picture holder

very strongly and elegantly finished, with best  
optic lenses.



373 &amp; 374

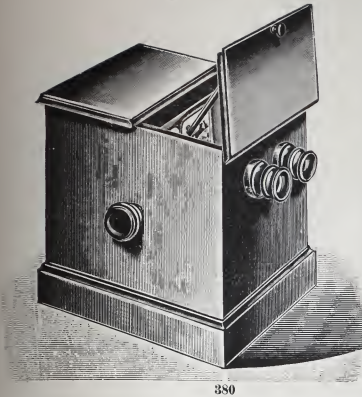
**373 Real mahogany wood, polished, with stand,**

lens  $3\frac{3}{8}$  in. diam.,  $8\frac{1}{2}$  in. long,  $5\frac{3}{4}$  in. wide, each Mk. 5.50

**374 Real mahogany wood, polished, with stand,**

lens  $4\frac{1}{8}$  in. diam., 10 in. long,  $6\frac{3}{4}$  in. wide, » » 11.—

*Views for Microphores see page 206.*



## Fine Revolving Apparatus

(Stereorama)

for showing a large number of transparent  
or opaque  
stereoscope pictures

finely polished mahogany wood, with screwed oculars,  
new strong revolving mechanism, mirror reflector and  
frosted glass back

|                                 |      |           |
|---------------------------------|------|-----------|
| 380/1 for 12 pictures . . . . . | each | Mk. 16.50 |
| » /2 » 25 » . . . . .           | » »  | 18.—      |
| » /3 » 50 » . . . . .           | » »  | 22.—      |



9216/1



9216/2-5



8896/1



8896/2



9023

## Stereoscope pictures

Views from all parts of the world.

|                                                        |      |          |
|--------------------------------------------------------|------|----------|
| 9216/1 good finish, views and miscellaneous . . . . .  | each | Mk. —.11 |
| » /2 fine » rich assortment of views . . . . .         | » »  | — .16    |
| » /3 extra fine » » » . . . . .                        | » »  | — .25    |
| » /4 » » » of finely coloured views » »                | » »  | — .30    |
| » /5 » » children's scenes and miscellaneous . . . . . | » »  | — .40    |

|                                                        |      |          |
|--------------------------------------------------------|------|----------|
| 8896/1 good finish, transparent and coloured . . . . . | each | Mk. —.30 |
| » /2 extra fine finish, » » »                          | » »  | — .35    |
| very rich assortment . . . . .                         | » »  | — .35    |

|                                                                                                    |      |          |
|----------------------------------------------------------------------------------------------------|------|----------|
| 9023 finest finish, transparent and coloured, devil scenes<br>(diableries) very original . . . . . | each | Mk. —.38 |
|----------------------------------------------------------------------------------------------------|------|----------|

*Stereoscope pictures 9216/2 and /4 can only be sold in series of 25.*

*Pictures for Microphores see next page.*



8900

## Microphore Pictures.

Varied assortment of Photographs, representing Children Scenes,  
Celebrated Men and Miscellaneous

fitting to Microphores 370—374.

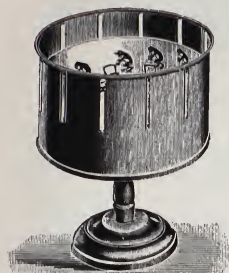
8900/1 Carte de Visite Form . . . . . each **Mk.** —.25  
» /2 Cabinet Forms . . . . . » » —.45

## Zootropes (Wheels of Life).

Russian Iron

with strong wood stand and 6 strips of pictures = 12 pictures.

9192/1 4 1/4 in. diam. . . . . each **Mk.** —.35  
» /2 5 1/4 » » . . . . . » » —.60  
» /3 6 1/4 » » . . . . . » » 1.  
» /4 7 1/4 » » . . . . . » » 1.35  
» /5 9 1/2 » » . . . . . » » 1.85



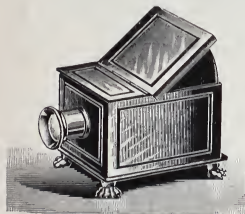
9192

### Zootrope Pictures

in series of 6 strips = 12 pictures.

|                           |       |       |       |       |
|---------------------------|-------|-------|-------|-------|
| 8914/1                    | 2     | 3     | 4     | 5     |
| per serie <b>Mk.</b> —.22 | — .30 | — .35 | — .45 | — .65 |

*Zootropes as models for steam Engines see page 41.*



3500

## Camera Obscura

(Drawing Apparatus)

finely bronzed, with lens, mirror, frosted glass and movable hood.

3500/0 6 in. long, 5 1/4 in. wide, 5 1/4 in. high . . . . . each **Mk.** 2.25  
» /1 6 1/2 » » 6 » » 6 » » . . . . . » » 2.75  
» /2 8 1/4 » » 7 » » 7 » » . . . . . » » 3.25



13412  
with nickelled  
handle.

## Shaving Mirrors

superfine quality, two sided, **one side convex** (magnifying) and **1 side plain**,  
silvered, in fine wood mountings.

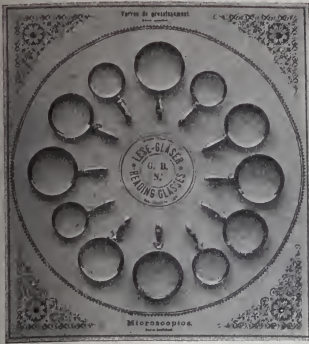
|              | size 1                     | 2             | 3           | 4           | 5           | 6           | 7           | 8                  |
|--------------|----------------------------|---------------|-------------|-------------|-------------|-------------|-------------|--------------------|
| frame diam.  | 4                          | 4 1/2         | 5           | 5 1/2       | 6           | 6 1/2       | 7           | 7 3/4 in.          |
| Mirror diam. | 3                          | 3 1/4         | 4           | 4 1/4       | 4 3/4       | 5 1/4       | 5 3/4       | 6 1/4 in.          |
|              | <b>Mk. 1.10</b>            | <b>1.35</b>   | <b>1.65</b> | <b>2.20</b> | <b>2.65</b> | <b>3.45</b> | <b>4.15</b> | <b>5.70</b> each   |
|              | <b>13412</b> » nickelled » | <b>» 1.50</b> | <b>1.80</b> | <b>2.20</b> | <b>2.75</b> | <b>3.30</b> | <b>4.15</b> | <b>4.85</b> 6.60 » |

13411  
with wood handle.

13411 with wood handle **Mk. 1.10** 1.35 1.65 2.20 2.65 3.45 4.15 5.70 each



# Magnifying and Reading Glasses in Metal Mountings.



9029

## Reading Glasses (Magnifying)

sewn on Cards, superior quality

with **finely nickelled** brass mountings and **finely nickelled** solid handle

- 9029/1½ with **good** lenses, 4 each size 1, 1<sup>3</sup>/<sub>16</sub>,  
1<sup>3</sup>/<sub>8</sub> in. on 1 card . . . . . per card **Mk. 2.90**  
» /2½ with **sharp** lenses, 4 each size 1<sup>3</sup>/<sub>16</sub>,  
1<sup>3</sup>/<sub>8</sub>, 1<sup>9</sup>/<sub>16</sub> in. on 1 card . . . . . » » » **3.75**



7008

## Reading Glasses

with **nickelled** mountings and black japanned wood handle

|          | 35   | 40   | 45   | 50   | 57 mm diam.  |
|----------|------|------|------|------|--------------|
|          | 1    | 1¼   | 1½   | 1¾   | 2            |
|          |      |      |      |      | 2¼ in. diam. |
| each Mk. | -.12 | -.15 | -.18 | -.23 | -.32         |
|          | 75   | 87   | 100  |      | 115 mm diam. |
|          | 2½   | 3    | 3½   | 4    | 4½ in. diam. |
| each Mk. | -.50 | -.65 | 85.- | 1.25 | 1.75         |



7012

## Reading Glasses

superior quality

with **oxydized** brass mountings and cast brass handle

|          | 35   | 40   | 45   | 50   | 60 mm diam.  |
|----------|------|------|------|------|--------------|
|          | 1    | 1¼   | 1½   | 1¾   | 2            |
|          |      |      |      |      | 2¼ in. diam. |
| each Mk. | -.25 | -.35 | -.55 | -.80 | 1.-          |
|          |      |      |      |      | 1.25         |



7009

## Reading Glasses

with **finely nickelled** brass mountings and black polished wood handle.

|          | 45   | 50   | 55   | 65   | 75   | 90   | 102 mm diam. |
|----------|------|------|------|------|------|------|--------------|
|          | 1¼   | 1¾   | 2    | 2¼   | 2½   | 3    | 3½           |
|          |      |      |      |      |      |      | 4 in. diam.  |
| each Mk. | -.45 | -.50 | -.55 | -.65 | -.70 | 1.05 | 1.50         |
|          |      |      |      |      |      |      | 2.05         |

# Reading Glasses in Metal Mountings.



7007

## 7007 Reading Glasses

with **nickelled** mountings

2 in. diam. . . . . each **Mk.** —.35



7011

## 7011 Reading Glasses

with **nickelled** mountings and fancy **nickelled** brass handle

2 in. diam. . . . . each **Mk.** —.25

7010 & 7013  
folding

## Reading Glasses

**folding**, with **nickelled** mounting

7010/1 1<sup>3</sup>/<sub>4</sub> in. diam. . . . . each **Mk.** —.20  
 » /2 2<sup>1</sup>/<sub>4</sub> » » . . . . . » » —.35

## Reading Glasses

**folding**, with **finely nickelled** brass mountings

|                 | 40   | 50 mm diam.                               |
|-----------------|------|-------------------------------------------|
| 7013/30         | 1    | 1 <sup>1</sup> / <sub>2</sub> 2 in. diam. |
| each <b>Mk.</b> | —.50 | —.65 —.95                                 |



7294

## 7294 Three Legged Magnifying Glasses

superior quality, Brass with 2 sharp Lenses and screw thread

1<sup>3</sup>/<sub>4</sub> in. diam., 1<sup>1</sup>/<sub>2</sub> in. high, **very strongly finished** . . . . . each **Mk.** —.90



9059

## 9059 Cloth Testers

hinged and **folding**, white metal, with sharp Lense

□ 4×4 in. . . . . each **Mk.** —.55

# Magnifying and Reading Glasses in Horn Mountings.

The measurements represent the diameter of the Lenses, the horn mountings are not reckoned in.



9972

## Reading Glasses, superior quality, with sharp clear Lenses in Horn Mountings

|          |                               |                               |                               |                               |                               |                               |                                         |
|----------|-------------------------------|-------------------------------|-------------------------------|-------------------------------|-------------------------------|-------------------------------|-----------------------------------------|
|          | 9972/24                       | 30                            | 36                            | 42                            | 48                            | 54                            | 60 mm diam.                             |
|          | 1                             | 1 <sup>1</sup> / <sub>8</sub> | 1 <sup>1</sup> / <sub>4</sub> | 1 <sup>5</sup> / <sub>8</sub> | 1 <sup>7</sup> / <sub>8</sub> | 2 <sup>1</sup> / <sub>8</sub> | 2 <sup>3</sup> / <sub>8</sub> in. diam. |
| each Mk. | -.33                          | -.40                          | -.50                          | -.60                          | -.70                          | -.80                          | 1.05                                    |
|          | 9972/66                       | 72                            | 78                            | 84                            | 90                            | 96 mm diam.                   |                                         |
|          | 2 <sup>5</sup> / <sub>8</sub> | 2 <sup>7</sup> / <sub>8</sub> | 3                             | 3 <sup>3</sup> / <sub>8</sub> | 3 <sup>1</sup> / <sub>4</sub> | 3 <sup>3</sup> / <sub>4</sub> | in. diam.                               |
| each Mk. | 1.30                          | 1.70                          | 2.10                          | 2.65                          | 3.35                          | 4.30                          |                                         |

## Beetle Magnifying Glasses, with sharp clear Lenses in Horn Mountings single (1 glass).



9976

|          |                             |      |                               |                               |                               |                               |                               |
|----------|-----------------------------|------|-------------------------------|-------------------------------|-------------------------------|-------------------------------|-------------------------------|
|          | 9976/18                     | 24   | 30                            | 36                            | 42                            | 54                            | 60 mm diam.                   |
|          | <sup>3</sup> / <sub>4</sub> | 1    | 1 <sup>1</sup> / <sub>8</sub> | 1 <sup>1</sup> / <sub>4</sub> | 1 <sup>5</sup> / <sub>8</sub> | 1 <sup>7</sup> / <sub>8</sub> | 2 <sup>1</sup> / <sub>8</sub> |
| each Mk. | -.40                        | -.50 | -.65                          | -.85                          | 1.15                          | 1.50                          | 2.15                          |
|          | 9977/18                     | 24   | 30                            | 36                            | 42                            | 48 mm diam.                   |                               |
|          | <sup>3</sup> / <sub>4</sub> | 1    | 1 <sup>1</sup> / <sub>8</sub> | 1 <sup>1</sup> / <sub>4</sub> | 1 <sup>5</sup> / <sub>8</sub> | 1 <sup>7</sup> / <sub>8</sub> | in. diam.                     |
| each Mk. | -.60                        | -.70 | 1.-                           | 1.40                          | 2.-                           | 2.50                          |                               |



9973

## Botanical Magnifying Glasses, with sharp clear Lenses in Horn Mountings single (1 glass).

|          |                             |      |                               |                               |                               |                                         |
|----------|-----------------------------|------|-------------------------------|-------------------------------|-------------------------------|-----------------------------------------|
|          | 9973/18                     | 24   | 30                            | 36                            | 42                            | 48 mm diam.                             |
|          | <sup>3</sup> / <sub>4</sub> | 1    | 1 <sup>1</sup> / <sub>8</sub> | 1 <sup>1</sup> / <sub>4</sub> | 1 <sup>5</sup> / <sub>8</sub> | 1 <sup>7</sup> / <sub>8</sub> in. diam. |
| each Mk. | -.50                        | -.55 | -.80                          | 1.05                          | 1.50                          | 2.-                                     |



9974

## Botanical Magnifying Glasses, with sharp clear Lenses in Horn Mountings double (2 glasses).

|          |                             |      |                               |                               |                               |                                         |
|----------|-----------------------------|------|-------------------------------|-------------------------------|-------------------------------|-----------------------------------------|
|          | 9974/18                     | 24   | 30                            | 36                            | 42                            | 48 mm diam.                             |
|          | <sup>3</sup> / <sub>4</sub> | 1    | 1 <sup>1</sup> / <sub>8</sub> | 1 <sup>1</sup> / <sub>4</sub> | 1 <sup>5</sup> / <sub>8</sub> | 1 <sup>7</sup> / <sub>8</sub> in. diam. |
| each Mk. | -.70                        | -.80 | 1.15                          | 1.50                          | 2.40                          | 3.15                                    |



9975

## Botanical Magnifying Glasses, with sharp clear Lenses triple (3 glasses).

|          |                             |      |                               |                               |                               |                                         |
|----------|-----------------------------|------|-------------------------------|-------------------------------|-------------------------------|-----------------------------------------|
|          | 9975/18                     | 24   | 30                            | 36                            | 42                            | 48 mm diam.                             |
|          | <sup>3</sup> / <sub>4</sub> | 1    | 1 <sup>1</sup> / <sub>8</sub> | 1 <sup>1</sup> / <sub>4</sub> | 1 <sup>5</sup> / <sub>8</sub> | 1 <sup>7</sup> / <sub>8</sub> in. diam. |
| each Mk. | 1.-                         | 1.10 | 1.50                          | 2.05                          | 3.30                          | 4.35                                    |

# Optical Lenses.

## Magnifying Glasses, biconvex

long focus with rounded rims, for various purposes



7414

|          |                |                |                |                |                |                |                          |
|----------|----------------|----------------|----------------|----------------|----------------|----------------|--------------------------|
|          | 7414/25        | 30             | 35             | 40             | 45             | 50             | 55 mm diam.              |
|          | 1              | $1\frac{1}{8}$ | $1\frac{1}{4}$ | $1\frac{1}{2}$ | $1\frac{3}{4}$ | 2              | $2\frac{1}{8}$ in. diam. |
| each Mk. | -.03           | -.05           | -.07           | -.09           | -.14           | -.18           | -.22                     |
|          | 60             | 65             | 70             | 75             | 80             | 90             | 100 mm diam.             |
|          | $2\frac{3}{8}$ | $2\frac{1}{2}$ | $2\frac{3}{4}$ | 3              | $3\frac{1}{8}$ | $3\frac{1}{2}$ | 4 in. diam.              |
| each Mk. | -.30           | -.48           | -.55           | -.75           | 1.05           | 1.20           | 1.50                     |



7420

sharp Lenses, with short Focus and rounded rims

|          |                    |                |                    |                    |                |                |                          |
|----------|--------------------|----------------|--------------------|--------------------|----------------|----------------|--------------------------|
|          | 7420/18            | 22             | 25                 | 30                 | 35             | 40             | 45 mm diam.              |
|          | $\frac{3}{4}$      | $\frac{7}{8}$  | 1                  | $1\frac{1}{8}$     | $1\frac{1}{4}$ | $1\frac{1}{2}$ | $1\frac{3}{4}$ in. diam. |
| each Mk. | -.05 $\frac{1}{2}$ | -.06           | -.06 $\frac{1}{2}$ | -.07 $\frac{1}{2}$ | -.13           | -.16           | -.18                     |
|          | 50                 | 55             | 60                 | 65                 | 70             | 75             | 80 mm diam.              |
|          | 2                  | $2\frac{1}{4}$ | $2\frac{3}{8}$     | $2\frac{1}{2}$     | $2\frac{3}{4}$ | 3              | $3\frac{1}{8}$ in. diam. |
| each Mk. | -.25               | -.27           | -.35               | -.45               | -.60           | -.75           | 1.05                     |

## Plano-Convex Lenses

with rounded rims



7421



7338

|          |                    |                    |                |                |                |      |                |                |                |                          |
|----------|--------------------|--------------------|----------------|----------------|----------------|------|----------------|----------------|----------------|--------------------------|
|          | 7421/25            | 30                 | 35             | 40             | 45             | 50   | 55             | 60             | 65             | 70 mm diam.              |
|          | 1                  | $1\frac{1}{8}$     | $1\frac{1}{4}$ | $1\frac{1}{2}$ | $1\frac{3}{4}$ | 2    | $2\frac{1}{4}$ | $2\frac{3}{8}$ | $2\frac{1}{2}$ | $2\frac{3}{4}$ in. diam. |
| each Mk. | -.07 $\frac{1}{2}$ | -.08 $\frac{1}{2}$ | -.13           | -.16           | -.20           | -.24 | -.37           | -.42           | -.55           | -.70                     |

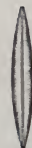
## Biconcave Lenses

with rounded rims

|          |                |                |                |                |             |
|----------|----------------|----------------|----------------|----------------|-------------|
|          | 7338/30        | 35             | 40             | 45             | 50 mm diam. |
|          | $1\frac{1}{8}$ | $1\frac{1}{4}$ | $1\frac{1}{2}$ | $1\frac{3}{4}$ | 2 in. diam. |
| each Mk. | -.10           | -.14           | -.16           | -.19           | -.28        |

## Fine Panorama Lenses

biconvex, with rounded rims



9763



9763

|          |                |                |                |                |              |
|----------|----------------|----------------|----------------|----------------|--------------|
|          | 9763/135       | 150            | 160            | 175            | 190 mm diam. |
|          | 5              | $5\frac{1}{2}$ | 6              | $6\frac{1}{2}$ | 7 in. diam.  |
| each Mk. | 2.10           | 2.75           | 3.60           | 4.50           | 4.95         |
|          | 9763/200       | 215            | 225            | 240            | 270 mm diam. |
|          | $7\frac{1}{2}$ | 8              | $8\frac{1}{2}$ | 9              | 10 in. diam. |
| each Mk. | 5.80           | 6.60           | 6.90           | 7.50           | 8.80         |

## Prismatic Stereoscope Lenses



7423



7423

|              |                                    |                                    |                                    |                                        |
|--------------|------------------------------------|------------------------------------|------------------------------------|----------------------------------------|
|              | 7423/00                            | 0                                  | 1                                  | 2                                      |
|              | $1\frac{1}{8} \times 1\frac{1}{8}$ | $1\frac{1}{4} \times 1\frac{1}{4}$ | $1\frac{1}{2} \times 1\frac{1}{2}$ | $1\frac{3}{4} \times 1\frac{3}{4}$ in. |
| per pair Mk. | -.20                               | -.23                               | -.36                               | -.55                                   |

## Round Stereoscope Lenses

|          |                 |                |                |                          |
|----------|-----------------|----------------|----------------|--------------------------|
|          | 7439/33         | 41             | 48             | 54 mm diam.              |
|          | $1\frac{5}{16}$ | $1\frac{9}{8}$ | $1\frac{7}{8}$ | $2\frac{1}{8}$ in. diam. |
| each Mk. | -.08            | -.12           | -.18           | -.25                     |

## Sundry Parts for Magic Lanterns.



6642



6643

**Objectives**, finely nickelled.

|                  |                                |            |      |       |      |      |      |      |      |
|------------------|--------------------------------|------------|------|-------|------|------|------|------|------|
|                  | <b>6642/25</b>                 | 30         | 35   | 40    | 45   | 50   | 55   | 60   |      |
| fitting Lanterns | 200, 400, 550/3                | 3 1/2      | 4    | 4 1/2 | 5    | 6    | 7    | 8    |      |
|                  | each Mk.                       | -.30       | -.35 | -.50  | -.60 | -.65 | -.75 | 1.15 |      |
|                  | <b>6643/30</b>                 | 35         | 40   | 45    | 50   | 55   | 60   | 65   |      |
| fitting Lanterns | 600, 950,<br>1000, 1100, 1450, | 1540/3 1/2 | 4    | 4 1/2 | 5    | 6    | 7    | 8    | 9    |
|                  | each Mk.                       | -.60       | -.75 | -.85  | -.90 | 1.-  | 1.20 | 1.40 | 1.60 |

**Condensers** with metal mountings.

|                  |                       |      |       |      |      |      |      |      |
|------------------|-----------------------|------|-------|------|------|------|------|------|
|                  | <b>6644/30</b>        | 35   | 40    | 45   | 50   | 55   | 60   |      |
| fitting Lanterns | 950, 1000, 1100/3 1/2 | 4    | 4 1/2 | 5    | 6    | 7    | 8    |      |
|                  | each Mk.              | -.17 | -.25  | -.28 | -.32 | -.42 | -.55 | -.70 |

**Reflectors**, finely nickelled.

|                  |                    |      |      |      |      |
|------------------|--------------------|------|------|------|------|
|                  | <b>6645/55</b>     | 60   | 70   | 80   |      |
| fitting Lanterns | 600 & 1540/4 1/2-5 | —    | 6-7  | 8-9  |      |
|                  | 1000/3 1/2-4 1/2   | 5-6  | 7-8  | —    |      |
|                  | each Mk.           | -.09 | -.10 | -.12 | -.15 |



6644



6645

**6646 Achromatic Objectives**

finely finished with cog-wheel gear  
fitting to Sciopticons 3400/11.

Lense diam. 1 3/4 in., with cap, each **Mk. 11.-**

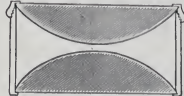
**6647 Condensers**

fitting to Sciopticons 3200 & 3400/11.

Lense diam. 4 in. . . . . each **Mk. 7.-**



6646



6647

**Petroleum lamps for Magic lanterns**

with flat burner.

|                  |                  |         |      |      |      |      |              |      |
|------------------|------------------|---------|------|------|------|------|--------------|------|
|                  | <b>6657/1</b>    | 2       | 3    | 4    | 5    | 6    | 7            |      |
| fitting Lanterns | 200/3--3 1/2     | 4-4 1/2 | 5    | —    | 6    | 7    | 8            |      |
|                  | 600/ —           | 4 1/2   | 5    | —    | 6    | 7    | 8-9          |      |
|                  | 1000/3 1/2-4 1/2 | —       | 5-6  | 7-8  | —    | —    | —            |      |
|                  | with 3           | 3       | 5    | 8    | 5    | 8    | 8''' burners |      |
|                  | each Mk.         | -.32    | -.35 | -.40 | -.45 | -.48 | -.55         | -.60 |

with round burner.

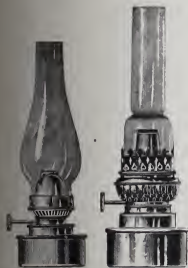
|                  |               |      |      |               |      |
|------------------|---------------|------|------|---------------|------|
|                  | <b>6658/1</b> | 2    | 3    | 4             |      |
| fitting Lanterns | 1540/4-4 1/2  | 5-6  | 7    | 8-9           |      |
|                  | with 8        | 10   | 10   | 12''' burners |      |
|                  | each Mk.      | -.95 | 1.10 | 1.25          | 1.45 |

**Chimneys for flat burners.**

|                |               |       |           |
|----------------|---------------|-------|-----------|
|                | <b>6672/3</b> | 5     | 8'''      |
| rim diam. abt. | 1 1/4         | 1 1/2 | 1 3/8 in. |
| per doz. Mk.   | -.65          | -.75  | -.85      |

**Chimneys for round burners.**

|                |               |       |           |
|----------------|---------------|-------|-----------|
|                | <b>6680/8</b> | 10    | 12'''     |
| rim diam. abt. | 1 3/8         | 1 1/2 | 1 3/4 in. |
| per doz. Mk.   | -.70          | -.75  | -.85      |



6657



6658

**Wicks to lantern lamps.****Flat Burner Wicks.**

|                       |               |      |      |      |
|-----------------------|---------------|------|------|------|
|                       | <b>6682/3</b> | 5    | 8''' |      |
| p. Mtr. = abt. 39 in. | Mk.           | -.05 | -.07 | -.10 |

**Round Burner Wicks.**

|                       |               |      |       |      |
|-----------------------|---------------|------|-------|------|
|                       | <b>6709/8</b> | 10   | 12''' |      |
| p. Mtr. = abt. 39 in. | Mk.           | -.16 | -.19  | -.27 |



6682



6709